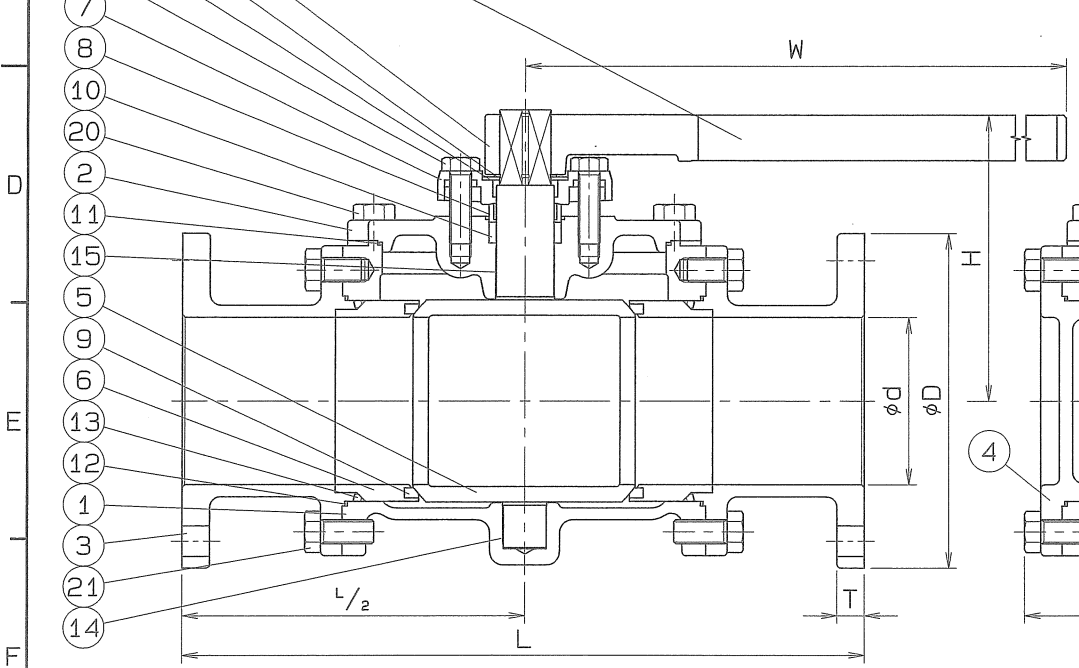
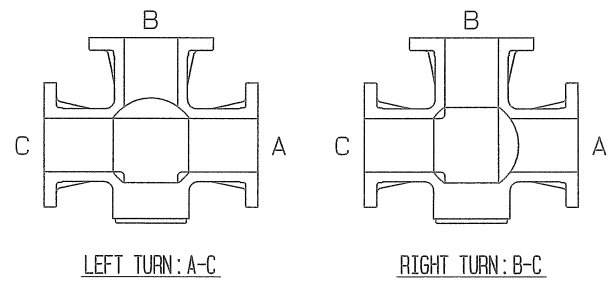
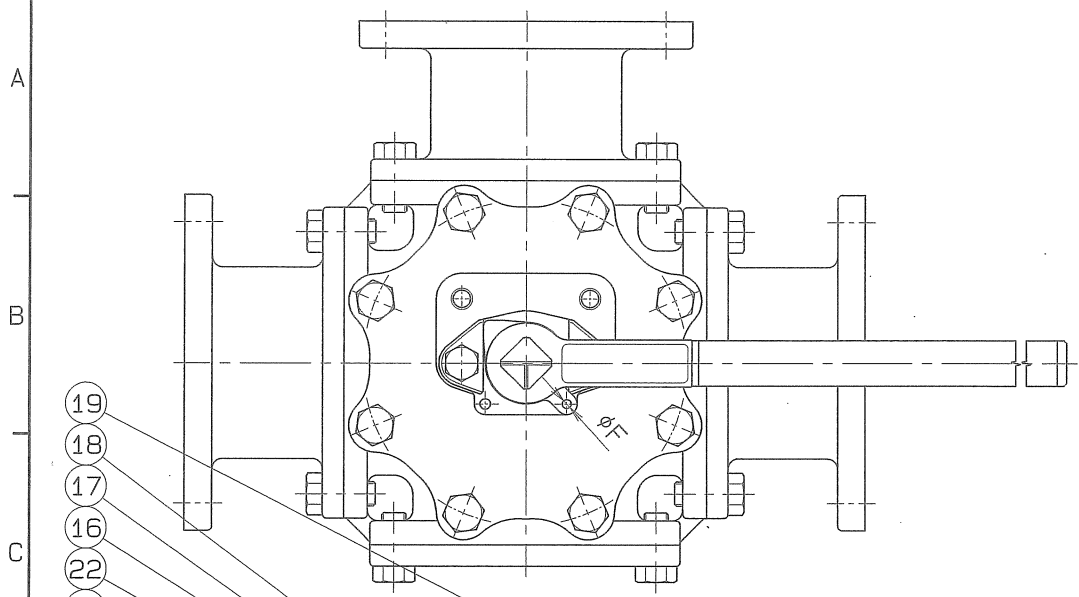


◇ 8960-S1VB 09'980

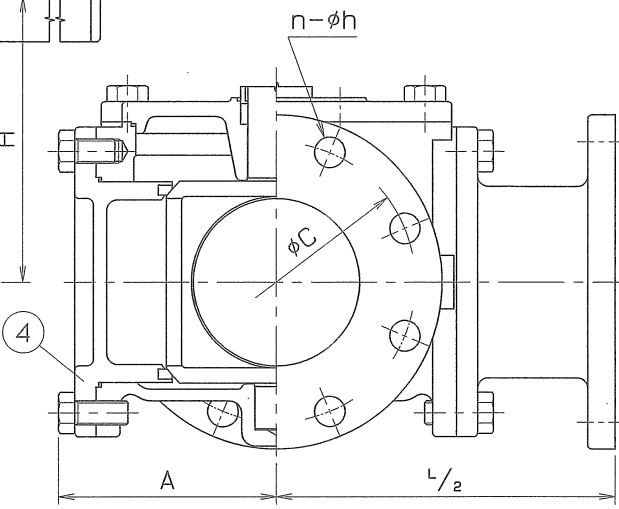
SIZE	d	L	D	T	BOLT HOLE			H	W	A	F	Q, TY
					C	n	h					
125	125	510	250	20	210	8	23	214	800	164	6.7	
150	150	580	280	22	240	8	23	236	800	201	6.7	



SPEC.		TEST PRESS.	
FLUID		SHELL	HYDRO 2.1 MPa (21.4 kgf/cm²)
PRESS.	MPa (kgf/cm²)	SEAT	AIR 0.6 MPa (6.1 kgf/cm²)
TEMP.	°C	AIR	MPa (kgf/cm²)

END FLANGED: JIS B 2220

No.	NAME OF PARTS	Q. TY	MATERIALS	REMARKS
22	GLAND BOLT	2	SUS 304	
21	BODY CAP BOLT	32	SUS 304	
20	COVER BOLT	8	SUS 304	
19	HANDLE PIPE	1	SGP	
18	HANDLE HEAD	1	FCD 450	
17	STOP RING	1	SUS 304	
16	STOPPER	1	SUS 304	
15	BEARING	1	P.T.F.E.	+SUS 316
14	BEARING	1	P.T.F.E.	+SUS 316
13	O RING	3	VITON	
12	GASKET PACKING	4	P.T.F.E.	
11	COVER PACKING	1	P.T.F.E.	
10	GLAND PACKING	1 ^{SET}	P.T.F.E.	
9	BALL SEAT	4	P.T.F.E.	
8	GLAND SLEEVE	1	SUS 316	
7	GLAND	1	SCS 13	
6	SEAT HOLDER	3	SUS 316	
5	BALL DISC	1	SCS 14A	
4	BLIND CAP	1	SCS 14A	
3	BODY CAP	3	SCS 14A	
2	BODY COVER	1	SCS 14A	
1	BODY	1	SCS 14A	



NAME	JIS 10K F.F. FLANGED ENDS 4-SEATS THREE WAY BALL VALVES T-PORT		
TYPE	N-737T	SIZE	125, 150A
DWG.No.	BATS-0968	APPROVED BY	K. Saito
DATE	APR. 20, 2007	CHECKED BY	K. Saito
SCALE		DESIGNED BY	
THIRD ANGLE PROJECTION METHOD		DRAWN BY	K. Saito

O. N. INDUSTRIES LTD.