

◇ 2362-BASS DMG.No.

SIZE	d	L	D	T	G	f	BOLT HOLE			H	W	A	B	Q, TY
80	80	203	185	18	126	2	C	n	h	173	400	90.5	5.1	
100	100	229	210	18	151	2	150	8	19	187	400	104.5	5.1	

SPEC.		TEST PRESSURE	
FLUID		SHELL	HYDRO 2.1 MPa (21.4 kgf/cm ²)
PRESS.	MPa (kgf/cm ²)	SEAT	AIR 0.6 MPa (6.1 kgf/cm ²)
TEMP.	°C		AIR MPa (kgf/cm ²)

FACE TO FACE: JIS B 2002
END FLANGED: JIS B 2220

16	GLAND BOLT	2	SUS 304	
15	BODY CAP BOLT	6	SUS 304	
14	HANDLE	1	FCD 450	
13	STOP RING	1	SUS 304	
12	STOPPER	1	SUS 304	
11	STEM BEARING	1	P.T.F.E.	GLASS FILLED
10	GLAND PACKING	1SET	P.T.F.E.	
9	THRUST BEARING	1	P.T.F.E.	GLASS FILLED
8	GASKET PACKING	1	P.T.F.E.	
7	BALL SEAT	2	P.T.F.E.	GLASS FILLED
6	GLAND	1	SCS 13	
5	GLAND SLEEVE	1	SUS 316	
4	STEM	1	SUS 316	
3	BALL DISC	1	SCS 14A	
2	BODY CAP	1	SCS 14A	
1	BODY	1	SCS 14A	

No.	NAME OF PARTS	Q.TY	MATERIALS	REMARKS
NAME JIS 10K R.F. FLANGED ENDS STRAIGHT WAY BALL VALVES				
TYPE	J-715	SIZE	80, 100 A	
DMG.No.	BASS-2362 ◇	APPROVED BY	K. Tsubota	
DATE	APR.02.2007.	CHECKED BY	K. Tsubota	
SCALE	:	DESIGNED BY	K. Tsubota	

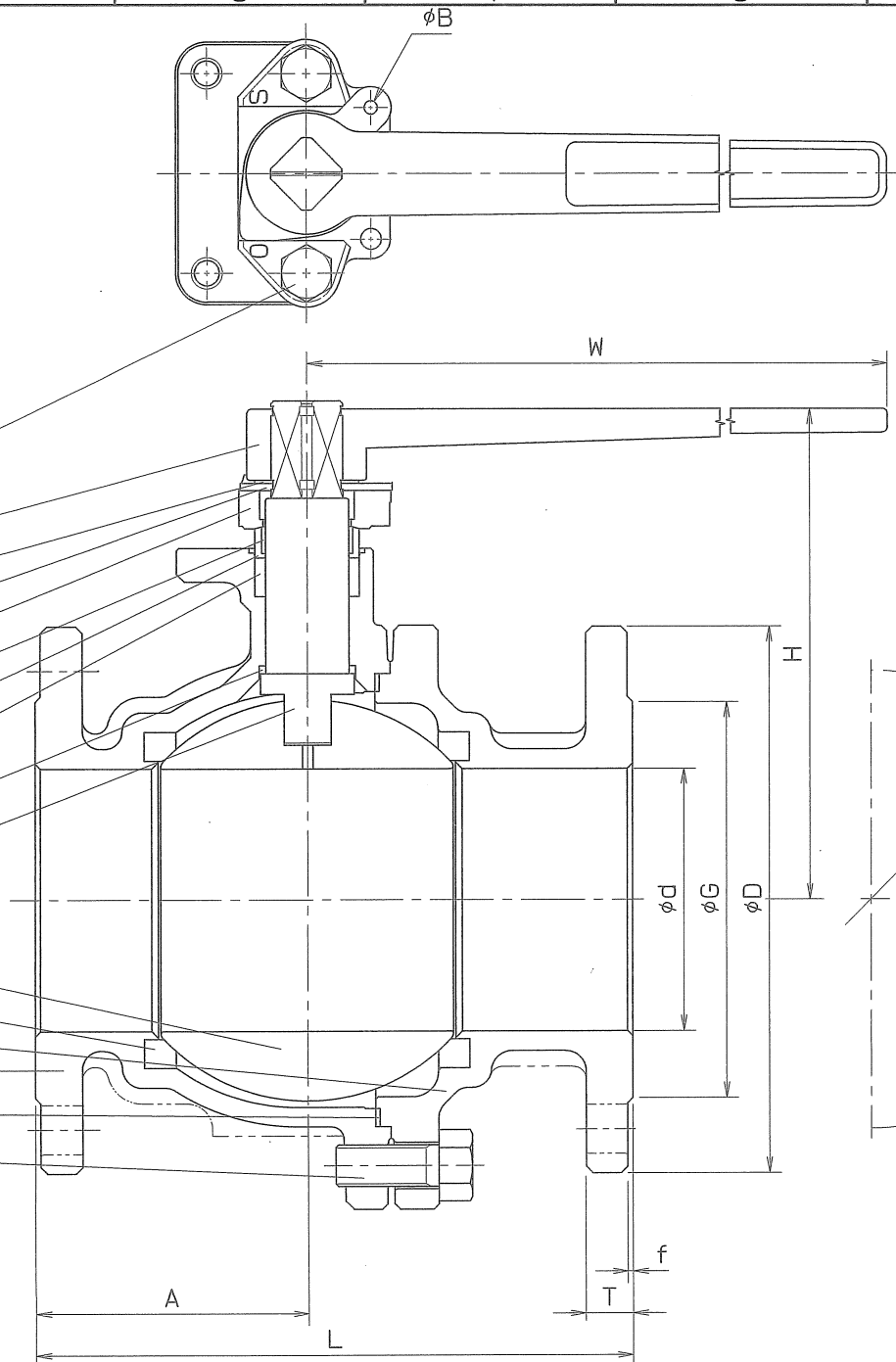
THIRD ANGLE PROJECTION METHOD DRAWN BY K. Tsubota

O. N. INDUSTRIES LTD.

A
B
C
D
E
F

A
B
C
D
E
F

- 16
- 14
- 13
- 12
- 6
- 11
- 5
- 10
- 9
- 4
- 3
- 7
- 2
- 1
- 8
- 15



△		
△		
△		