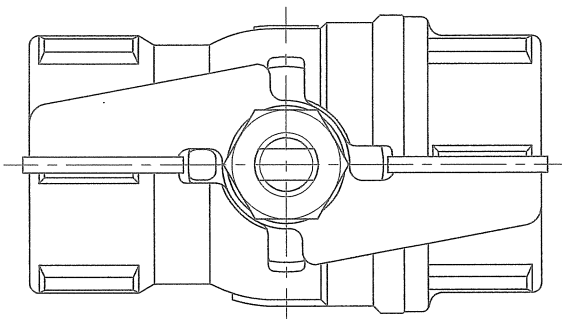
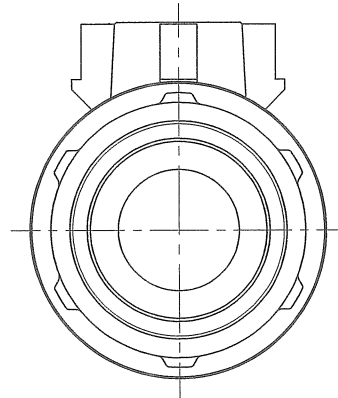
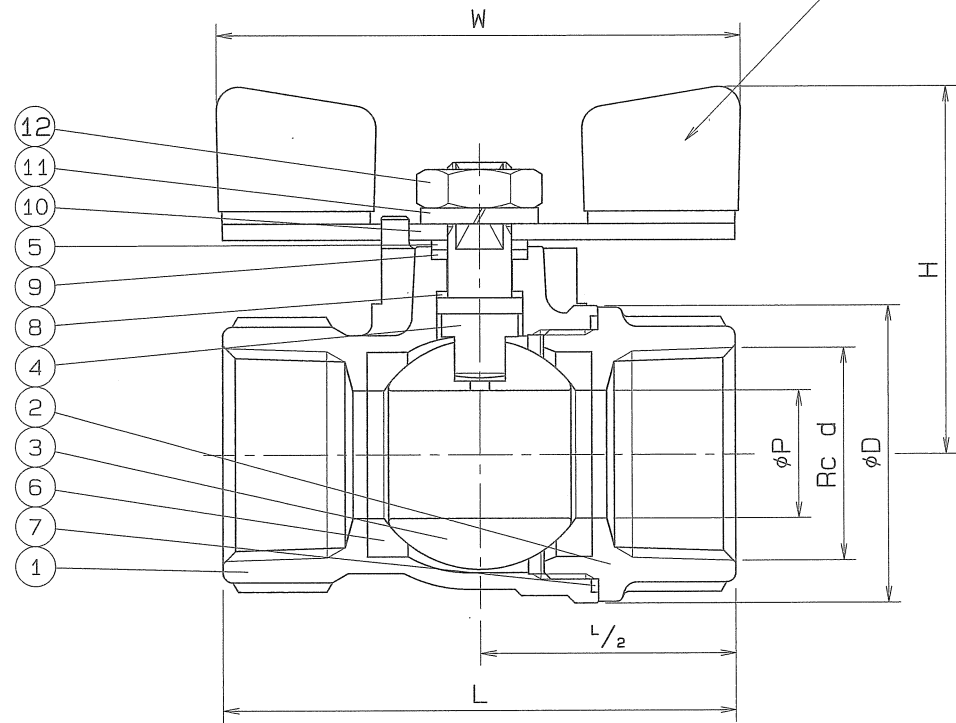


◇ 8260-SWAB Dwg. No. BAMS-0928

SIZE	PIPE THREADS d	P	L	H	W	D	Q, TY
3/8	Rc 3/8	8	55	45	60	27	
1/2	Rc 1/2	10	60	46	60	30	
3/4	Rc 3/4	15	70	50	60	38	
1	Rc 1	20	80	58	80	46.5	



PVC COATING



SPEC.		TEST PRESS.	
FLUID		SHELL	HYDRO 8.24 MPa (84 kgf/cm ²)
PRESS.	MPa (kgf/cm ²)	SEAT	AIR 0.6 MPa (6.1 kgf/cm ²)
TEMP.	°C	AIR	MPa (kgf/cm ²)

PIPE THREADS CONFORM WITH "JIS B 0203"
No.3 3/8, 1/2B MATERIALS : SUS 316

No.	NAME OF PARTS	Q.TY	MATERIALS	REMARKS
12	HEXAGON NUT	1	SUS 304	
11	SPRING WASHER	1	SUS 304	
10	HANDLE	1	SUS 304	
9	THRUST BEARING	1	P.T.F.E.	CARBON FILLED
8	THRUST PACKING	1	P.T.F.E.	CARBON FILLED
7	GASKET PACKING	1	P.T.F.E.	
6	BALL SEAT	2	P.T.F.E.	
5	GLAND	1	SUS 316	
4	STEM	1	SUS 316	
3	BALL DISC	1	SCS 14A	
2	BODY CAP	1	SCS 14	
1	BODY	1	SCS 14	

NAME	800 W.O.G. SCREWED ENDS MINI BALL VALVES REGULAR BORE		
TYPE	N-610	SIZE	3/8 ~ 1 B
Dwg.No.	BAMS-0928 ◇	APPROVED BY	<i>N. Takatsuka</i>
DATE	APR. 12. 2007	CHECKED BY	<i>N. Takatsuka</i>
SCALE	:	DESIGNED BY	
THIRD ANGLE PROJECTION METHOD		DRAWN BY	<i>N. Takatsuka</i>

O. N. INDUSTRIES LTD.

△		
△		
△		