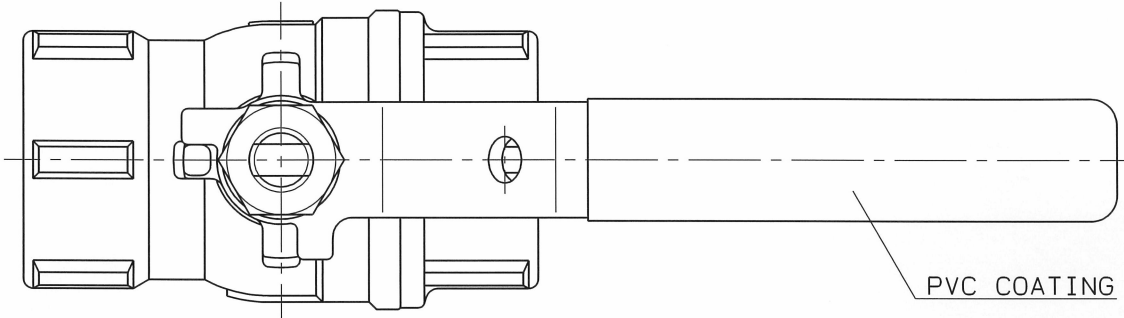


◇ 6260-SWAB | O.N. IND. |

SIZE	PIPE THREADS		P	L	H	W	D	Q. TY
	d							
3/8	Rc 3/8		8	55	49	100	27	
1/2	Rc 1/2		10	60	50	100	30	
3/4	Rc 3/4		15	70	54	100	38	
1	Rc 1		20	80	64	130	46.5	
1 1/4	Rc 1 1/4		25	90	68	130	54	



PVC COATING

SPEC.		TEST PRESS.	
FLUID		SHELL	HYDRO 8.24 MPa
PRESS.	MPa	SEAT	AIR 0.6 MPa
TEMP.	°C	AIR	MPa

PIPE THREADS CONFORM WITH "JIS B 0203"  
No.3 3/8, 1/2B MATERIAL: SUS 316

No.	NAME OF PARTS	Q. TY	MATERIALS	REMARKS
12	HEXAGON NUT	1	SUS 304	
11	SPRING WASHER	1	SUS 304	
10	HANDLE	1	SUS 304	
9	THRUST BEARING	1	P.T.F.E.	CARBON FILLED
8	THRUST PACKING	1	P.T.F.E.	CARBON FILLED
7	GASKET PACKING	1	P.T.F.E.	
6	BALL SEAT	2	P.T.F.E.	
5	GLAND	1	SUS 316	
4	STEM	1	SUS 316	
3	BALL DISC	1	SCS 14A	
2	BODY CAP	1	SCS 14	
1	BODY	1	SCS 14	

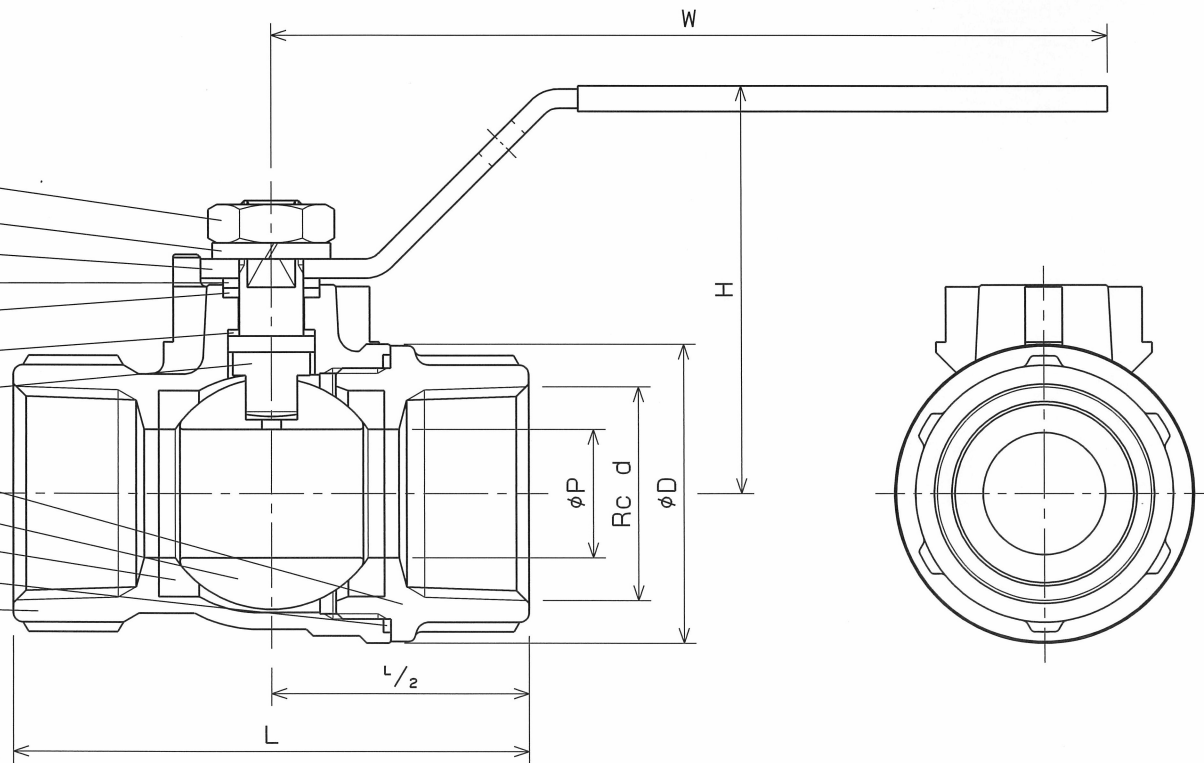
NAME	800 W.O.G. SCREWED ENDS BALL VALVES REDUCED BORE		
TYPE	N-610	SIZE	3/8 ~ 1 1/4 B
DN. No.	BAMS-0929 ◇	APPROVED BY	H. Ozawa
DATE	APR. 12. 2007	CHECKED BY	H. Ozawa
SCALE	:	DESIGNED BY	R. Matsuki
THIRD ANGLE PROJECTION METHOD	DRAWN BY		

**O. N. INDUSTRIES LTD.**

A  
B  
C  
D  
E  
F

1 2 3 4 5 6 7 8

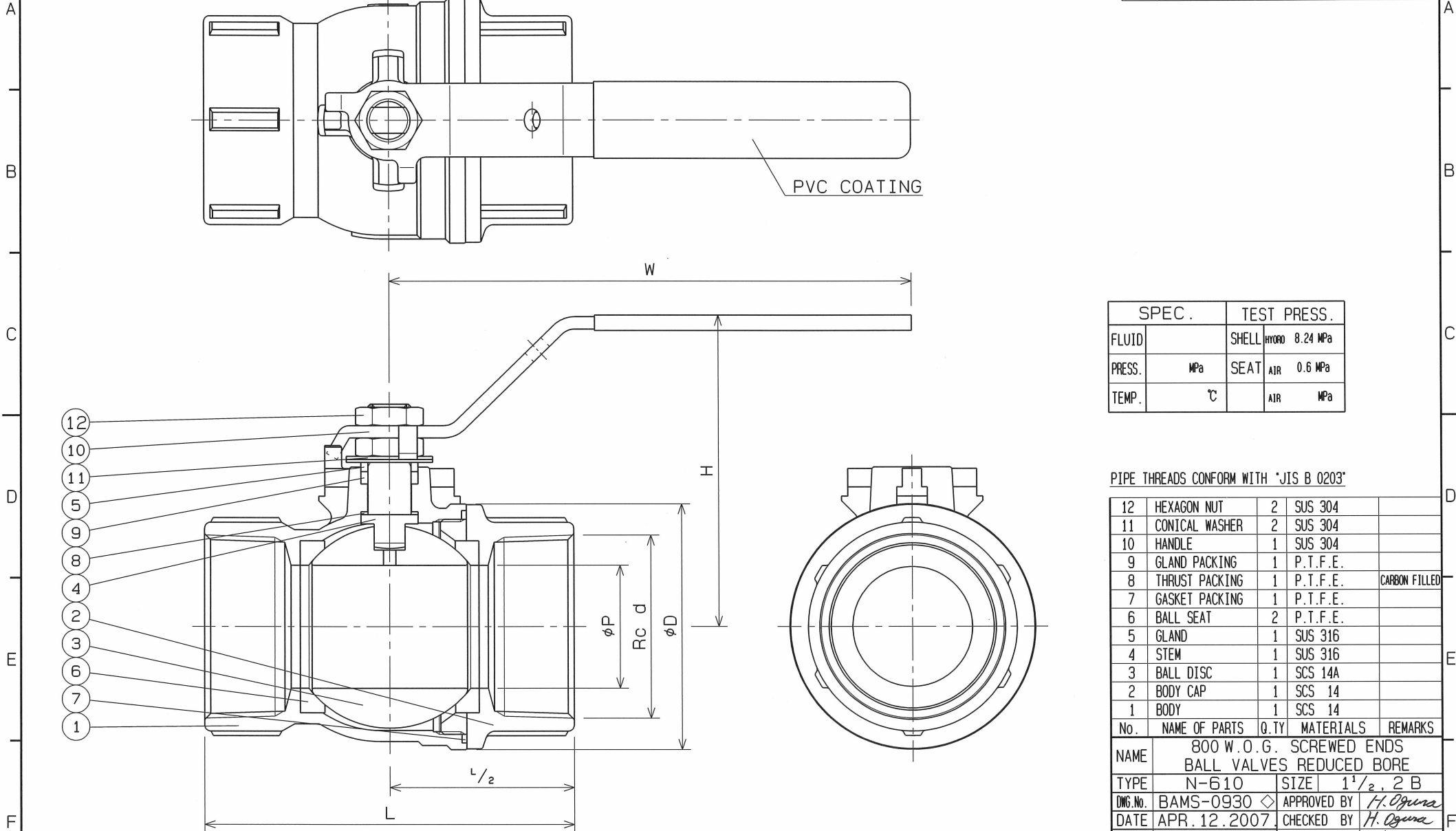
- 12
- 11
- 10
- 5
- 9
- 8
- 4
- 2
- 3
- 6
- 7
- 1



△		
△		
△		

◇ OEG60-SAMB BAMS-0930 DWG. NO.

SIZE	PIPE THREADS	P	L	H	W	D	Q. TY
	d						
1 1/2	Rc 1 1/2	32	100	96	170	67	
2	Rc 2	40	120	102	170	80	



SPEC.		TEST PRESS.	
FLUID		SHELL	HYDRO 8.24 MPa
PRESS.	MPa	SEAT	AIR 0.6 MPa
TEMP.	°C	AIR	MPa

PIPE THREADS CONFORM WITH "JIS B 0203"

No.	NAME OF PARTS	Q. TY	MATERIALS	REMARKS
12	HEXAGON NUT	2	SUS 304	
11	CONICAL WASHER	2	SUS 304	
10	HANDLE	1	SUS 304	
9	GLAND PACKING	1	P.T.F.E.	
8	THRUST PACKING	1	P.T.F.E.	CARBON FILLED
7	GASKET PACKING	1	P.T.F.E.	
6	BALL SEAT	2	P.T.F.E.	
5	GLAND	1	SUS 316	
4	STEM	1	SUS 316	
3	BALL DISC	1	SCS 14A	
2	BODY CAP	1	SCS 14	
1	BODY	1	SCS 14	

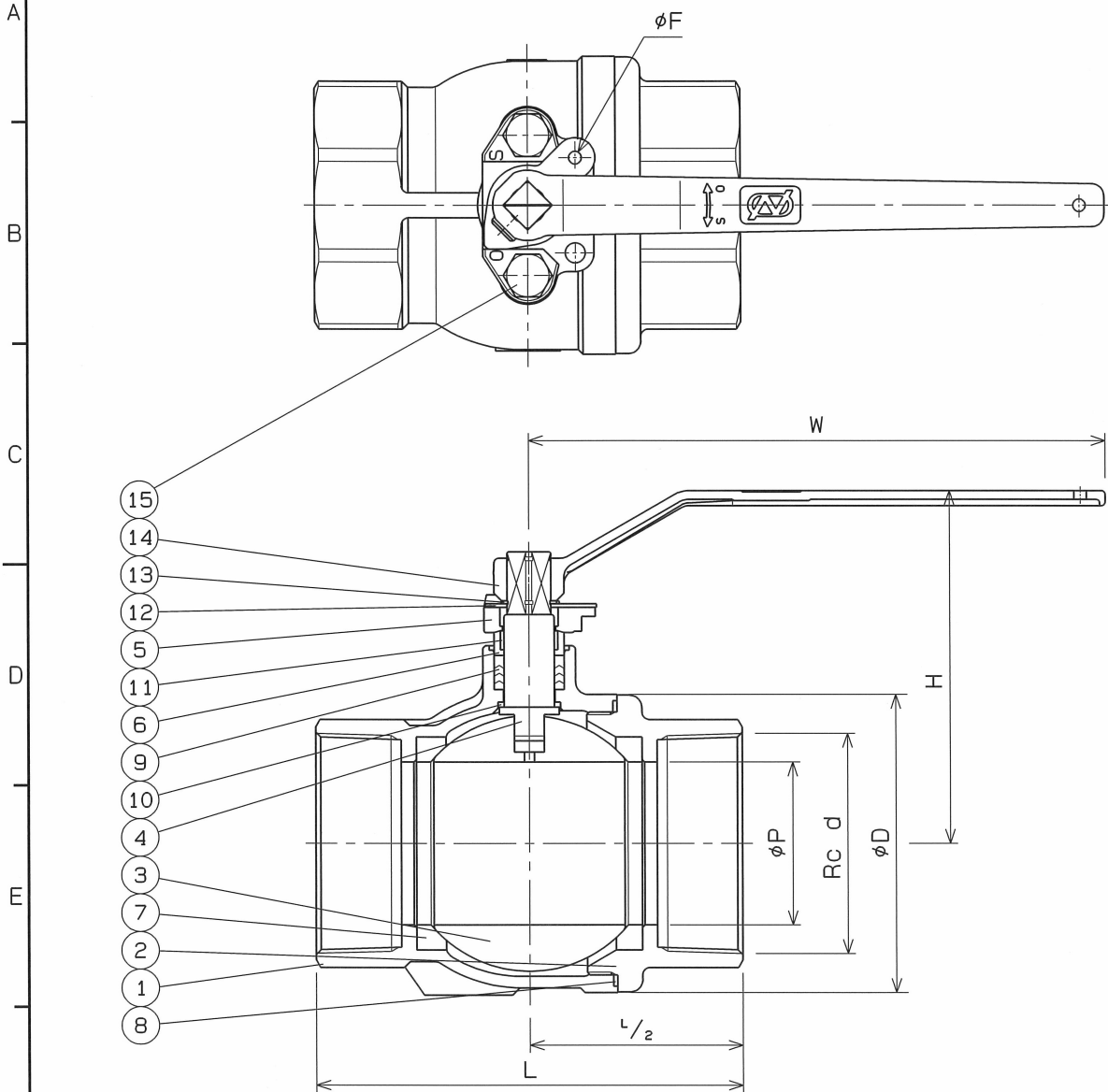
NAME	800 W.O.G. SCREWED ENDS BALL VALVES REDUCED BORE		
TYPE	N-610	SIZE	1 1/2, 2 B
DWG.No.	BAMS-0930 ◇	APPROVED BY	H. Ogura
DATE	APR. 12. 2007	CHECKED BY	H. Ogura
SCALE	:	DESIGNED BY	R. Matsumaki
THIRD ANGLE PROJECTION METHOD		DRAWN BY	

**O. N. INDUSTRIES LTD.**

△		
△		
△		

◇ 8160-SWAB DWG. No. BAMS-0918

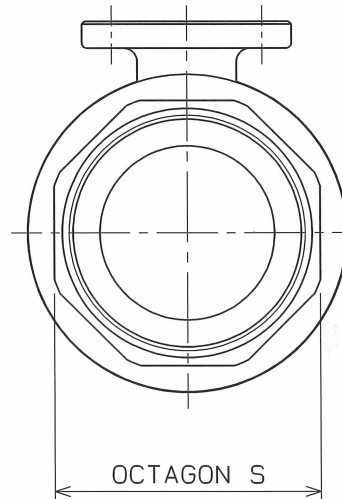
SIZE	PIPE THREADS d	P	L	H	W	D	S	F	Q. TY
2 1/2	Rc 2 1/2	50	145	131	230	98	85	5.1	
3	Rc 3	65	170	141	230	119	99	5.1	



SPEC.		TEST PRESS.	
FLUID		SHELL	HYDRO 2.1 MPa
PRESS.	MPa	SEAT	AIR 0.6 MPa
TEMP.	°C	AIR	MPa

PIPE THREADS CONFORM WITH "JIS B 0203"

No.	NAME OF PARTS	Q. TY	MATERIALS	REMARKS
15	GLAND BOLT	2	SUS 304	
14	HANDLE	1	SCS 13	
13	STOP RING	1	SUS 304	
12	STOPPER	1	SUS 304	
11	STEM BEARING	1	P. T. F. E.	GLASS FILLED
10	THRUST BEARING	1	P. T. F. E.	GLASS FILLED
9	GLAND PACKING	1set	P. T. F. E.	
8	GASKET PACKING	1	P. T. F. E.	
7	BALL SEAT	2	P. T. F. E.	
6	GLAND SLEEVE	1	SUS 316	
5	GLAND	1	SCS 13	
4	STEM	1	SUS 316	
3	BALL DISC	1	SCS 14A	
2	BODY CAP	1	SCS 14A	
1	BODY	1	SCS 14A	



No.	NAME OF PARTS	Q. TY	MATERIALS	REMARKS
NAME 400 W.O.G. SCREWED ENDS BALL VALVES REDUCED BORE				
TYPE		N-610	SIZE	2 1/2, 3 B
DWG. No.	BAMS-0918 ◇	APPROVED BY	<i>H. Ogawa</i>	
DATE	APR. 12. 2007	CHECKED BY	<i>H. Ogawa</i>	
SCALE	:	DESIGNED BY	<i>R. Matsuki</i>	
THIRD ANGLE PROJECTION METHOD		DRAWN BY		

**O. N. INDUSTRIES LTD.**