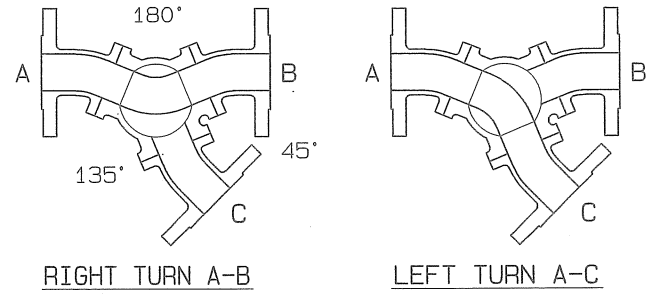
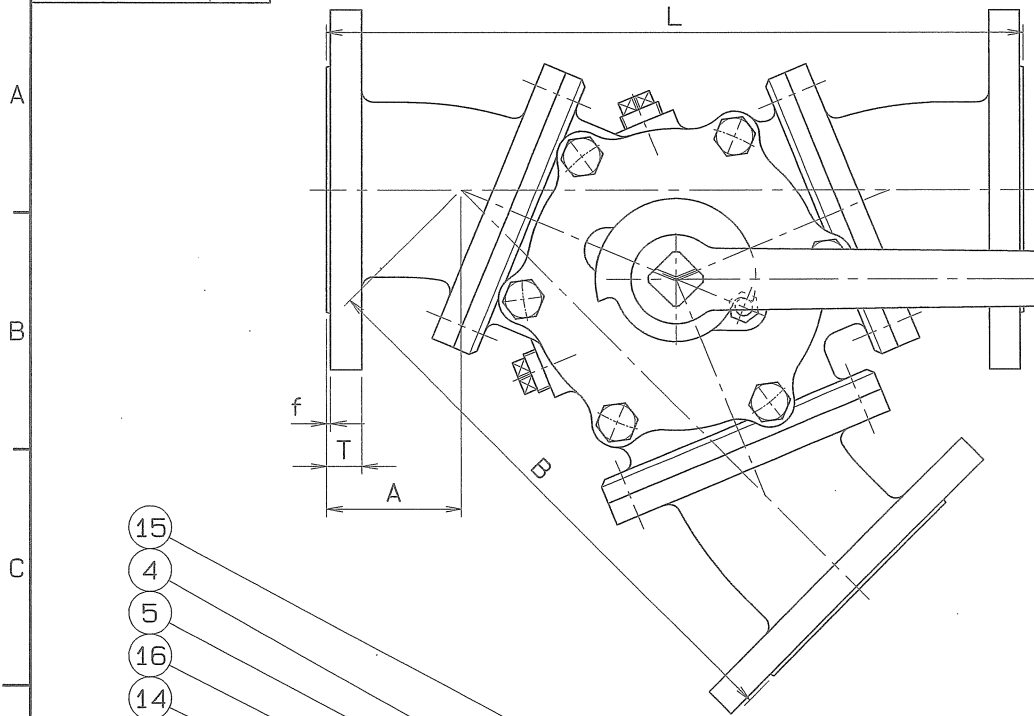


◇ 2260-11AB 10' 922

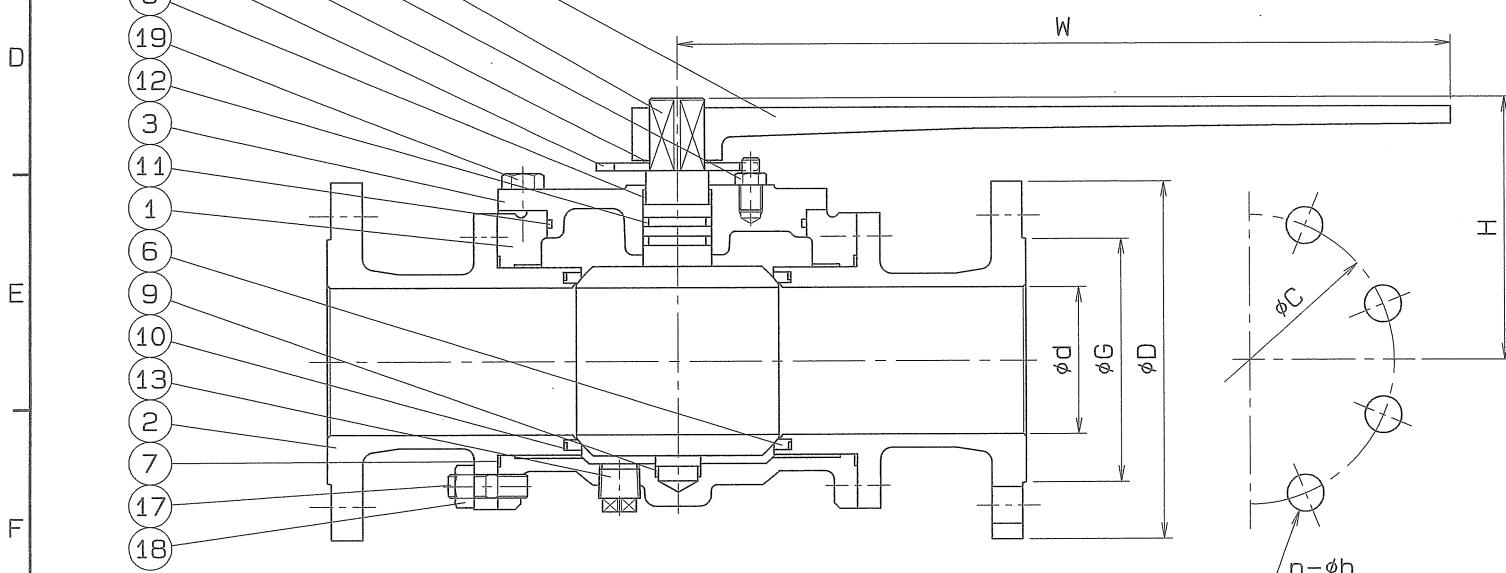
SIZE	d	L	A	B	H	W	FLANGED DIMENSION						Q.TY	
							D	G	T	f	C	n		h
50	51	280	56	224	120	320	155	96	16	2	120	4	19	
65	64	320	56.2	263.8	128	320	175	116	18	2	140	4	19	
80	76	360	68.9	291.1	132	400	185	126	18	2	150	8	19	
100	102	460	76	384	157	400	210	151	18	2	175	8	19	



SPEC.		TEST PRESS.	
FLUID		SHELL	HYDRO 2.1 MPa (21.4 kgf/cm <sup>2</sup> )
PRESS.	MPa ( kgf/cm <sup>2</sup> )	SEAT	AIR 0.6 MPa (6.1 kgf/cm <sup>2</sup> )
TEMP.	°C	AIR	MPa ( kgf/cm <sup>2</sup> )

END FLANGED: JIS B 2220

No.	NAME OF PARTS	Q.TY	MATERIALS	REMARKS
19	COVER BOLT	6	SUS 304	
18	HEXAGON NUT	18	SUS 304	50, 65A-12
17	STUD BOLT	18	SUS 304	50, 65A-12
16	STOP RING	1	SUS 304	
15	HANDLE	1	FCD 450	
14	STOPPER	1	SS 400	
13	DRAIN PLUG	3	SUS 304	
12	O RING	2	VITON	
11	O RING	1	VITON	
10	SEAT PACKING	3	VITON	
9	BEARING	1	P.T.F.E.	GLASS FILLED
8	BEARING	1	P.T.F.E.	GLASS FILLED
7	GASKET PACKING	3	P.T.F.E.	
6	BALL SEAT	3	P.T.F.E.	
5	STOPPER PIN	1	SUS 304	
4	BALL DISC	1	SCS 13A	
3	BODY COVER	1	SCS 13A	
2	BODY CAP	3	SCS 13A	
1	BODY	1	SCS 13A	



No.	NAME OF PARTS	Q.TY	MATERIALS	REMARKS
NAME JIS 10K R.F. FLANGED ENDS Y TYPE THREE WAY BALL VALVES				
TYPE N-736-11		SIZE 50-100A		
DWG.No.	BATS-0922 ◇	APPROVED BY	K. Tsumoto	
DATE	APR. 20, 2007.	CHECKED BY	Ch. Adachi	
SCALE	:	DESIGNED BY	-	
THIRD ANGLE PROJECTION METHOD		DRAWN BY	H. Taketaka	

**O. N. INDUSTRIES LTD.**