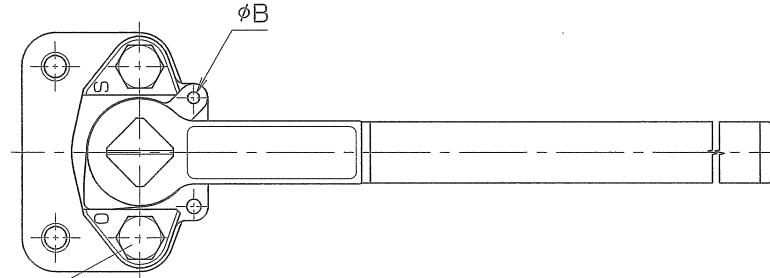
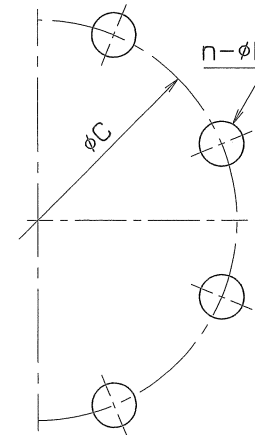
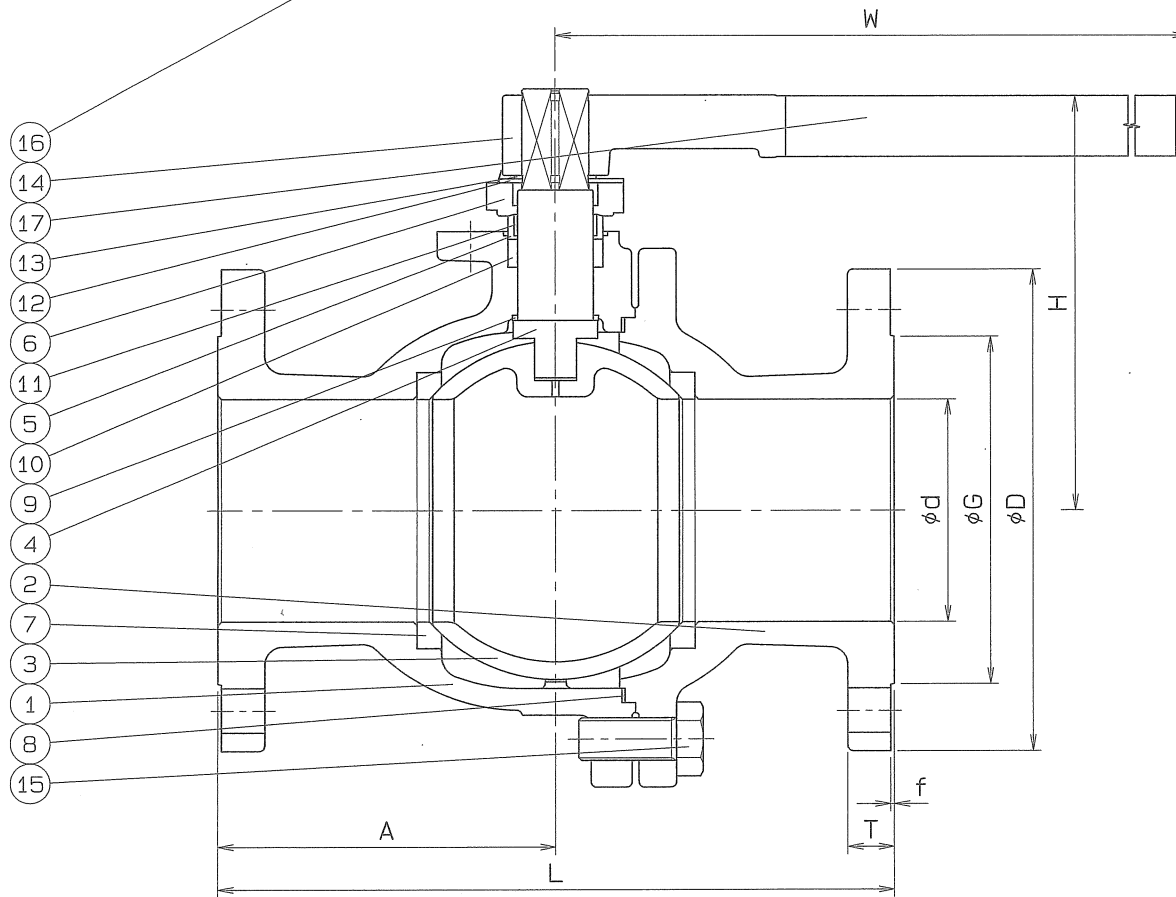


◇ ENG. No. | BASS-2375

SIZE	d	L	D	T	G	f	BOLT HOLE			W	H	A	B	Q. TY
							C	n	h					
125	125	381	270	26	195	2	225	8	25	800	233	190	6.7	
150	150	403	305	28	230	2	260	12	25	800	253	203	6.7	



SPEC.		TEST PRESS.	
FLUID		SHELL	HYDRO 5.0 MPa (51 kgf/cm ²)
PRESS.	MPa (kgf/cm ²)	SEAT	AIR 0.6 MPa (6.1 kgf/cm ²)
TEMP.	°C		AIR MPa (kgf/cm ²)



FACE TO FACE: JIS B 2002

END FLANGED: JIS B 2220

No.	NAME OF PARTS	Q. TY	MATERIALS	REMARKS
17	HANDLE PIPE	1	SGP	
16	GLAND BOLT	2	SUS 304	
15	BODY CAP BOLT	8	SUS 304	
14	HANDLE HEAD	1	FCD 450	
13	STOP RING	1	SUS 304	
12	STOPPER	1	SUS 304	
11	STEM BEARING	1	P. T. F. E.	GLASS FILLED
10	GLAND PACKING	1SET	P. T. F. E.	
9	THRUST BEARING	1	P. T. F. E.	GLASS FILLED
8	GASKET PACKING	1	P. T. F. E.	
7	BALL SEAT	2	P. T. F. E.	GLASS FILLED
6	GLAND	1	SCS 13	
5	GLAND SLEEVE	1	SUS 316	
4	STEM	1	SUS 304	
3	BALL DISC	1	SCS 13A	
2	BODY CAP	1	SCS 13A	
1	BODY	1	SCS 13A	

No.	NAME OF PARTS	Q. TY	MATERIALS	REMARKS
NAME JIS 20K R.F. FLANGED ENDS STRAIGHT WAY BALL VALVES				
TYPE	N-755	SIZE	125, 150 A	
ENG. No.	BASS-2375	◇	APPROVED BY	<i>K. Sumoto</i>
DATE	APR. 20. 2007		CHECKED BY	<i>Shota Hida</i>
SCALE			DESIGNED BY	
THIRD ANGLE PROJECTION METHOD			DRAWN BY	<i>K. Takahashi</i>

O. N. INDUSTRIES LTD.

△		
△		
△		