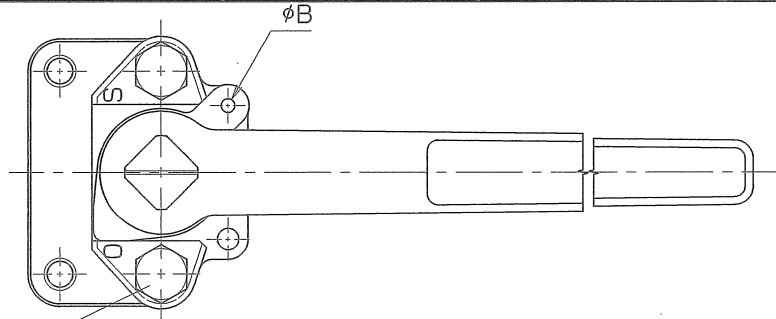


◇ Dwg. No. | BASS-2359

SIZE	d	L	D	T	G	f	BOLT HOLE			H	W	A	B	Q, TY
							C	n	h					
80	80	203	185	18	126	2	150	8	19	173	400	90.5	5.1	
100	100	229	210	18	151	2	175	8	19	187	400	104.5	5.1	



SPEC.		TEST PRESSURE	
FLUID		SHELL	HYDRO 2.1 MPa (21.4kgf/cm <sup>2</sup> )
PRESS.	MPa ( kgf/cm <sup>2</sup> )	SEAT	AIR 0.6 MPa (6.1 kgf/cm <sup>2</sup> )
TEMP.	°C	AIR	MPa ( kgf/cm <sup>2</sup> )

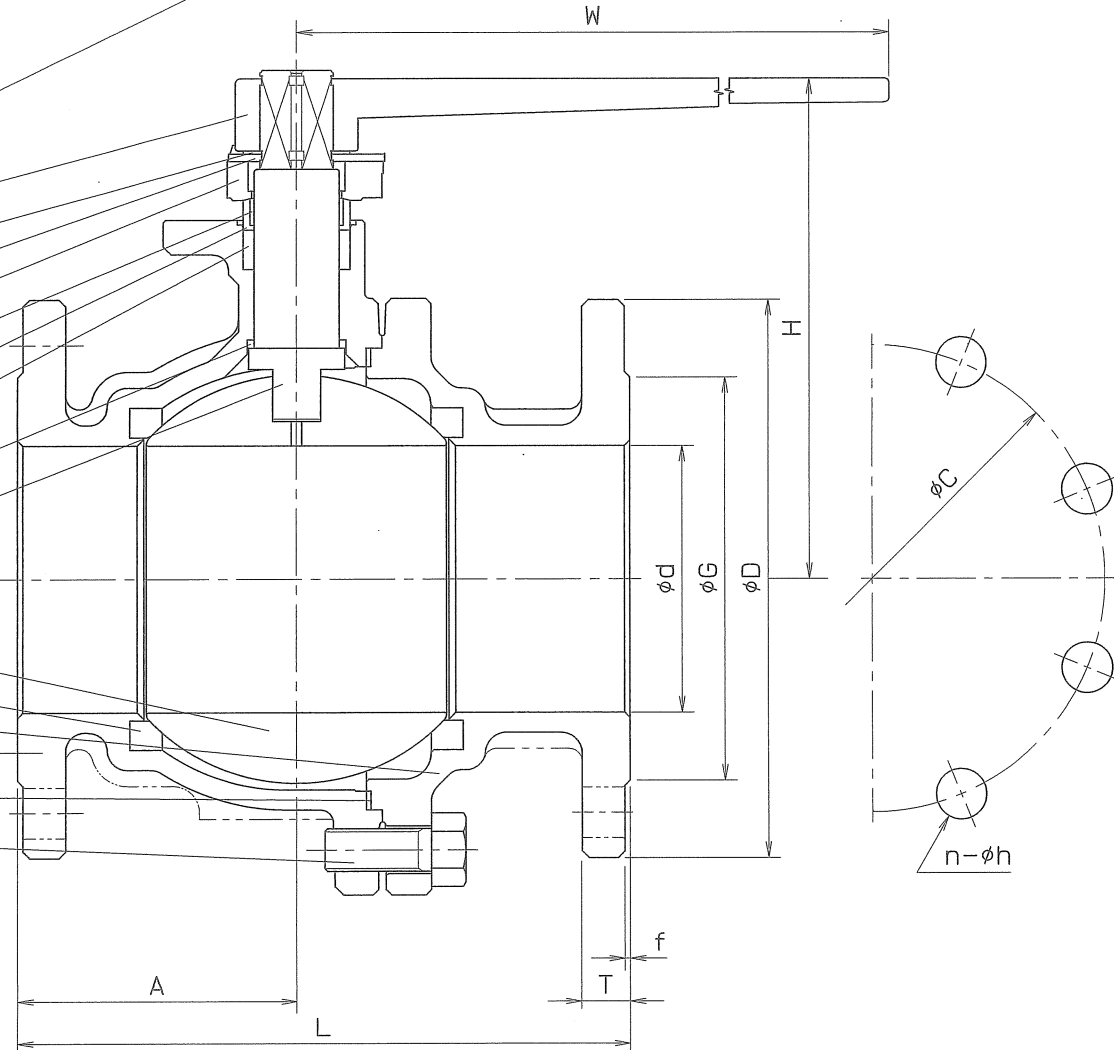
FACE TO FACE : JIS B 2002  
END FLANGED : JIS B 2220

16	GLAND BOLT	2	SUS 304	
15	BODY CAP BOLT	6	SUS 304	
14	HANDLE	1	FCD 450	
13	STOP RING	1	SUS 304	
12	STOPPER	1	SUS 304	
11	STEM BEARING	1	P.T.F.E.	GLASS FILLED
10	GLAND PACKING	1SET	P.T.F.E.	
9	THRUST BEARING	1	P.T.F.E.	GLASS FILLED
8	GASKET PACKING	1	P.T.F.E.	
7	BALL SEAT	2	P.T.F.E.	GLASS FILLED
6	GLAND	1	SCS 13	
5	GLAND SLEEVE	1	SUS 316	
4	STEM	1	SUS 304	
3	BALL DISC	1	SCS 13A	
2	BODY CAP	1	SCS 13A	
1	BODY	1	SCS 13A	

No.	NAME OF PARTS	Q. TY	MATERIALS	REMARKS
NAME JIS 10K R.F. FLANGED ENDS STRAIGHT WAY BALL VALVES				
TYPE	J-715	SIZE	80, 100 A	
Dwg. No.	BASS-2359 ◇	APPROVED BY	K. Yurata	
DATE	APR. 02. 2007	CHECKED BY	K. Yurata	
SCALE		DESIGNED BY		
THIRD ANGLE PROJECTION METHOD		DRAWN BY	K. Yurata	

**O. N. INDUSTRIES LTD.**

- 16
- 14
- 13
- 12
- 6
- 11
- 5
- 10
- 9
- 4
- 3
- 7
- 2
- 1
- 8
- 15



△		
△		
△		