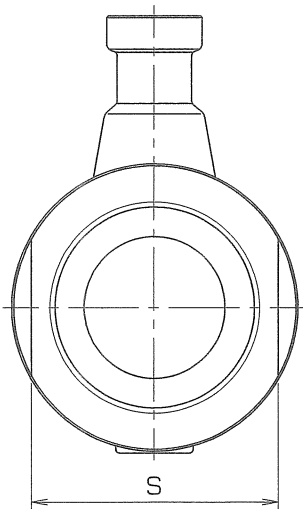
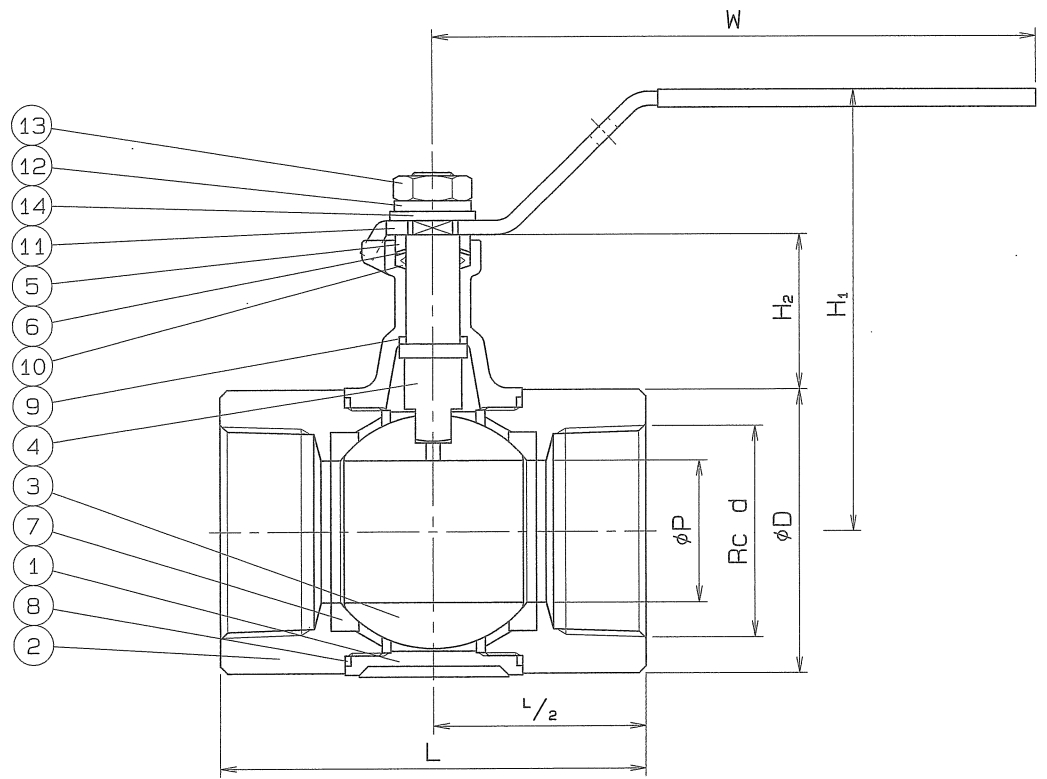
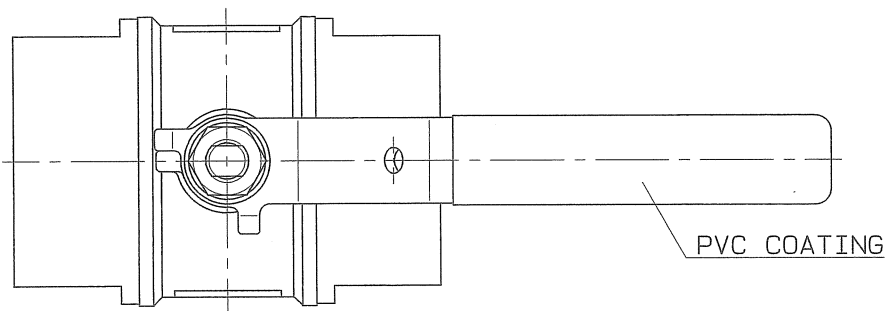


◇ 8860-SWAB DMG.No. BAMS-0933

SIZE	PIPE THREADS	P	L	H ₁	H ₂	W	D	S	Q, TY
	d								
1 1/2	Rc 1 1/2	32	100	119	45	170	67	56.5	
2	Rc 2	40	120	125	45	170	80	70	



SPEC.		TEST PRESS.	
FLUID		SHELL	HYDRO 8.24 MPa (84 kgf/cm ²)
PRESS.	MPa (kgf/cm ²)	SEAT	AIR 0.6 MPa (6.1 kgf/cm ²)
TEMP.	°C	AIR	MPa (kgf/cm ²)

PIPE THREADS CONFORM WITH "JIS B 0203"

No.	NAME OF PARTS	Q. TY	MATERIALS	REMARKS
14	PLAIN WASHER	1	SUS 304	
13	HEXAGON NUT	1	SUS 304	
12	SPRING WASHER	1	SUS 304	
11	HANDLE	1	SUS 304	
10	GLAND PACKING	1	P. T. F. E.	
9	BEARING	1	P. T. F. E.	CARBON FILLED
8	GASKET PACKING	2	P. T. F. E.	
7	BALL SEAT	2	P. T. F. E.	
6	WASHER	1	SUS 316	
5	GLAND BUSHING	1	SUS 304	
4	STEM	1	SUS 304	
3	BALL DISC	1	SCS 13A	
2	BODY CAP	2	SCS 13	
1	BODY	1	SCS 13	

NAME	800 W.O.G. SCREWED ENDS REGULAR BORE LONG NECK TYPE MINI BALL VALVES		
TYPE	N-200	SIZE	1 1/2, 2 B
DMG.No.	BAMS-0933 ◇	APPROVED BY	<i>H. Hasegawa</i>
DATE	AUG. 27. 2007	CHECKED BY	<i>A. Asakura</i>
SCALE	:	DESIGNED BY	
THIRD ANGLE PROJECTION METHOD		DRAWN BY	<i>K. Taketaka</i>

O. N. INDUSTRIES LTD.

△		
△		
△		