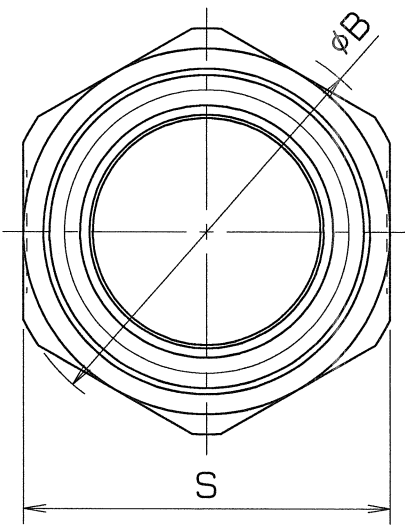
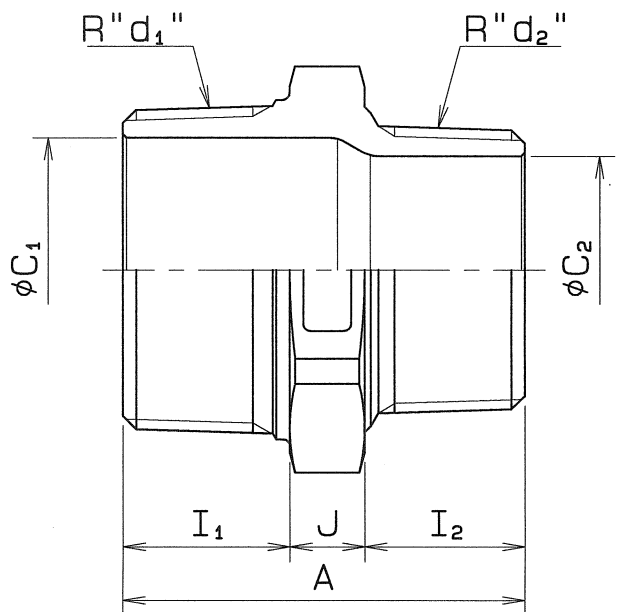


SIZE	PIPE THREADS		A	C ₁	C ₂	I ₁	I ₂	J	S	B	Q, TY
	d ₁	d ₂									
1/4	1/8	1/4	1/8	28	7.5	5	12	8	16	19	
3/8	1/8	3/8	1/8	29	11	5	13	8	8	19	22
	1/4		1/4	33							
1/2	1/4	1/2	1/4	36	14.5	7.5	16	12	8	24	27
	3/8		3/8	37							
3/4	3/8	3/4	3/8	39	20	11	18	13	8	29	32
	1/2		1/2	42							
1	1/2	1	1/2	45	25.5	14.5	21	16	8	36	40
	3/4		3/4	47							
1 1/4	3/4	1 1/4	3/4	52	33.5	20	23.5	19.5	9	46	52
	1		1	54							
1 1/2	1	1 1/2	1	57	39	25.5	24.5	21.5	11	54	60
	1 1/4		1 1/4	59							
2	1 1/4	2	1 1/4	63	50	33.5	27	23	13	63	70
	1 1/2		1 1/2	64							

MATERIAL : SCS 13 , SCS 14



SPEC		TEST PRESSURE	
FLUID		SHELL	AIR 0.6 MPa (6.1 kgf/cm ²)
PRESS.	MPa (kgf/cm ²)	AIR	MPa (kgf/cm ²)
TEMP.	°C	AIR	MPa (kgf/cm ²)

PIPE THREADS CONFORM WITH "JIS B 0203"

NAME	REDUCING NIPPLE		
TYPE	-	SIZE	1/4 ~ 2 B
DWG.No.	JADM-0022	APPROVED BY	<i>M. Yamato</i>
DATE	JAN. 15. 2002	CHECKED BY	<i>H. Asakura</i>
SCALE	:	DESIGNED BY	-
THIRD ANGLE PROJECTION METHOD		DRAWN BY	<i>M. Sakai</i>

△		
△	検査圧力の変更	H19. 6. 7.
△	呼び径の追加	H15. 2. 6.

O. N. INDUSTRIES LTD.