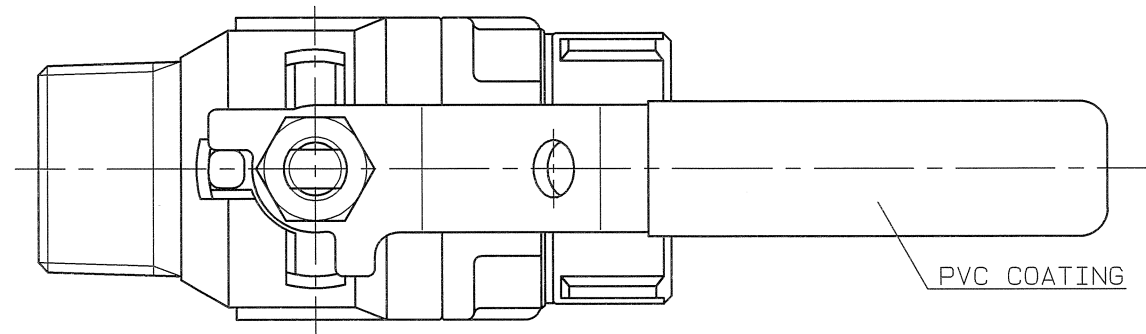


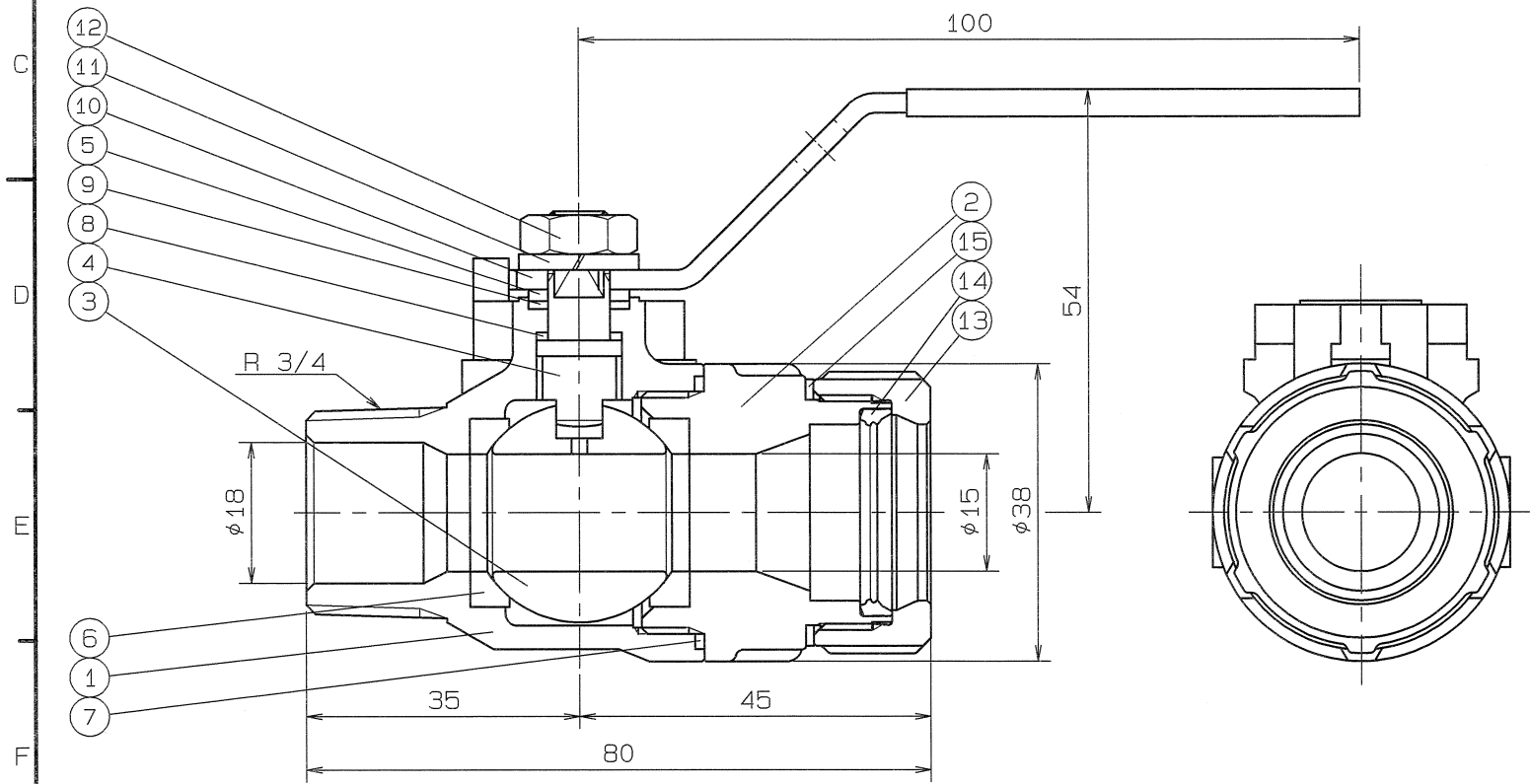
1 2 3 4 5 6 7 8

◇ 0993-BAMS-SWAB "ON" GMD

Q. TY: _____



SPEC .		TEST PRESSURE	
FLUID		SHELL	HYDRO 3.5 MPa
PRESS.	MAX 2.0 MPa	SEAT	AIR 0.6 MPa
TEMP.	MAX 100℃	AIR	MPa



PIPE THREADS CONFORM WITH "JIS B 0203"
*SPECIAL TEFLON

15	CONICAL WASHER	1	JFE443CT	
14	RUBBER PACKING	1	SYNTHETIC RUBBER (HNBR)	
13	NUT	1	SCS 13	
12	HEXAGON NUT	1	SUS 304	
11	SPRING WASHER	1	SUS 304	
10	HANDLE	1	SUS 304	
9	THRUST BEARING	1	P.T.F.E.	CARBON FILLED
8	THRUST PACKING	1	P.T.F.E.	CARBON FILLED
7	GASKET PACKING	1	P.T.F.E.	
6	BALL SEAT	2	P.T.F.E.	*
5	GLAND	1	SUS 316	
4	STEM	1	SUS 316	
3	BALL DISC	1	SCS 13A	
2	BODY CAP	1	SCS 13	
1	BODY	1	SCS 13	

No.	NAME OF PARTS	Q. TY	MATERIALS	REMARKS
NAME NICE JOINT AND SCREWED ENDS MINI BALL VALVES				
TYPE NJ-611		SIZE 20Sux3/4B		
DNG.No. BAMS-0993 ◇		APPROVED BY <i>R. Asakura</i>		
DATE JUL. 6.2016		CHECKED BY <i>Y. Asakura</i>		
SCALE :		DESIGNED BY <i>R. Matsuki</i>		
THIRD ANGLE PROJECTION METHOD		DRAWN BY		

O. N. INDUSTRIES LTD.

△		
△		
△		