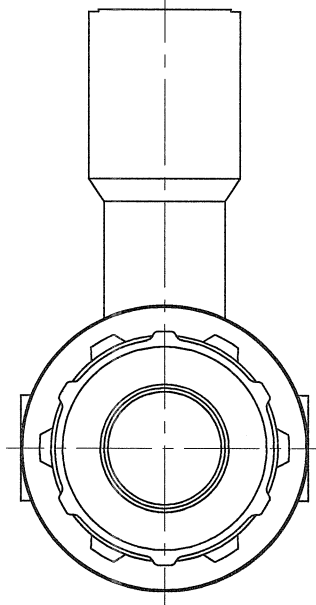
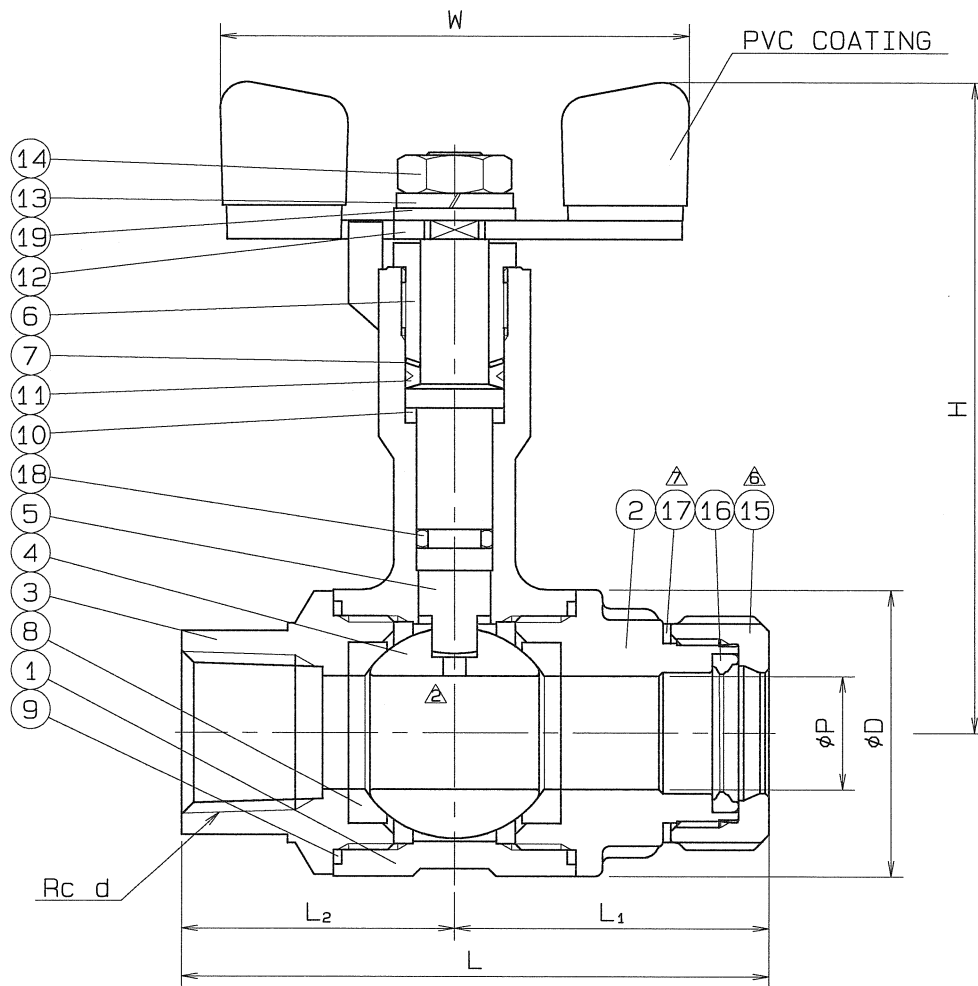
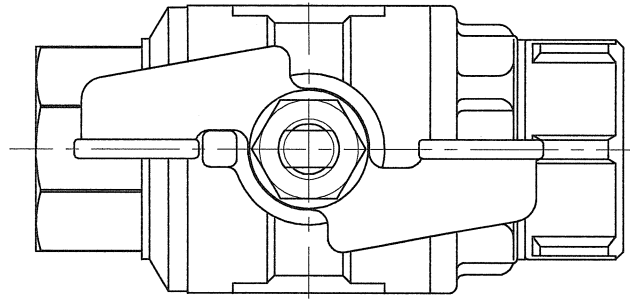


⊕ BAMS-0854 訂. 010

SIZE	d	P	L	L ₁	L ₂	H	W	D	Q, TY
20Sux3/4	Rc 3/4	20	88.5	47.5	41	94	80	47	



SPEC.		TEST PRESS.	
FLUID		SHELL	HYDRO 3.5 MPa (35.7 kgf/cm ²)
△ PRESS.	MAX 2.0 MPa (20.4 kgf/cm ²)	SEAT	AIR 0.6 MPa (6.1 kgf/cm ²)
△ TEMP.	MAX 100℃		AIR (MPa kgf/cm ²)

PIPE THREADS CONFORM WITH "JIS B 0203"
 △ *SPECIAL TEFLON

19	PLAIN WASHER	1	SUS 304	
18	O RING	1	VITON	
△ 17	CONICAL WASHER	1	JFE443CT	
16	RUBBER PACKIG	1	SYNTHETIC RUBBER (HNBR)	
△ 15	NUT	1	SCS 13	
14	HEXAGON NUT	1	SUS 304	
13	SPRING WASHER	1	SUS 304	
12	HANDLE	1	SUS 304	
11	GLAND PACKING	1	P.T.F.E.	
10	BEARING	1	P.T.F.E.	CARBON FILLED
9	GASKET PACKING	2	P.T.F.E.	
△ 8	BALL SEAT	2	P.T.F.E.	*
7	WASHER	1	SUS 304CSP	
△ 6	GLAND BUSHING	1	SCS 13	
5	STEM	1	SUS 304	
△ 4	BALL DISC	1	SCS 13A	△
3	BODY CAP (B)	1	SCS 13	Rc d
2	BODY CAP (A)	1	SCS 13	
1	BODY	1	SCS 13	

No.	NAME OF PARTS	Q.TY	MATERIALS	REMARKS
NAME NICE JOINT AND SCREWED ENDS FULL BORE LONG NECK TYPE MINI BALL VALVES				
TYPE		△NJ-222NF	SIZE	20Sux3/4
DWG.No.		BAMS-0854 ⊕	APPROVED BY <i>[Signature]</i>	
DATE		JAN. 21. 2002	CHECKED BY <i>[Signature]</i>	
SCALE		:	DESIGNED BY <i>[Signature]</i>	
THIRD ANGLE PROJECTION METHOD			DRAWN BY <i>[Signature]</i>	

△ 使用圧力、使用温度追加	H24. 1. 13.
△ 検査圧力の変更	H23. 2. 9.
△ 面ワッシ材料変更	H22. 2. 10.

O. N. INDUSTRIES LTD.