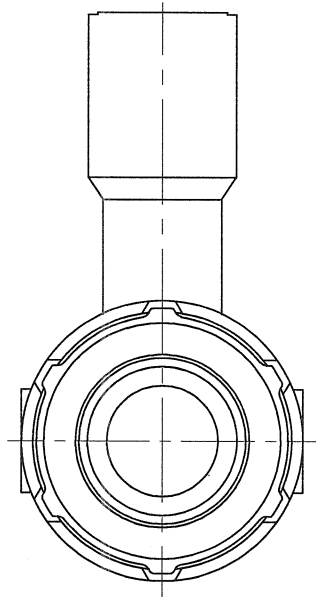
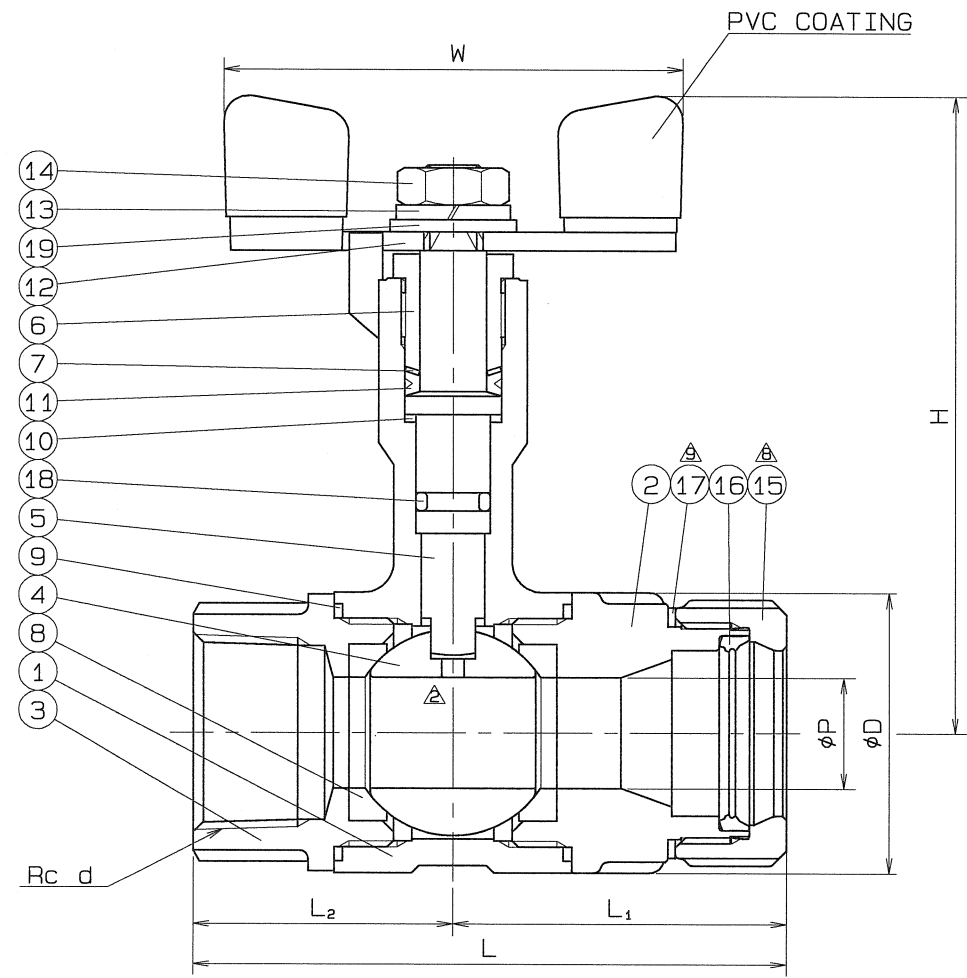
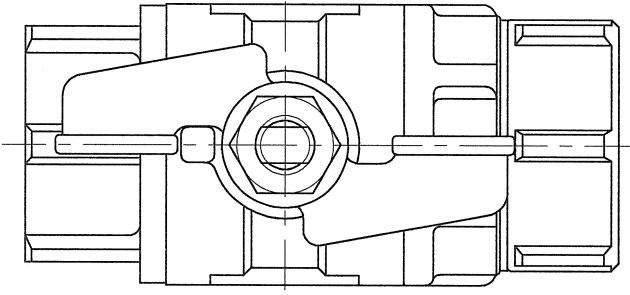


◇ BAMS-0852

SIZE	d	P	L	L ₁	L ₂	H	W	D	Q, TY
20Su x 3/4	Rc 3/4	15	80	45	35	87	60	38	
25Su x 1	Rc 1	20	88.5	48.5	40	94	80	47	



SPEC.		TEST PRESS.	
FLUID		SHELL	HYDRO 3.5 MPa (35.7 kgf/cm ²)
△ PRESS.	MAX 2.0 MPa (20.4 kgf/cm ²)	SEAT	AIR 0.6 MPa (6.1 kgf/cm ²)
△ TEMP.	MAX 100°C	AIR	MPa (kgf/cm ²)

PIPE THREADS CONFORM WITH "JIS B 0203"

△ *SPECIAL TEFLON

No.	NAME OF PARTS	Q. TY	MATERIALS	REMARKS
19	PLAIN WASHER	1	SUS 304	
18	O RING	1	VITON	
△ 17	CONICAL WASHER	1	JFE443CT	
16	RUBBER PACKIG	1	SYNTHETIC RUBBER (HNBR)	
△ 15	NUT	1	SCS 13	
14	HEXAGON NUT	1	SUS 304	
13	SPRING WASHER	1	SUS 304	
12	HANDLE	1	SUS 304	
11	GLAND PACKING	1	P.T.F.E.	
10	THRUST PACKING	1	P.T.F.E.	CARBON FILLED
9	GASKET PACKING	2	P.T.F.E.	
△ 8	BALL SEAT	2	P.T.F.E.	*
7	WASHER	1	SUS 304CSP	
△ 6	GLAND BUSHING	1	SCS 13	
5	STEM	1	SUS 304	
△ 4	BALL DISC	1	SCS 13A	△
3	BODY CAP (B)	1	SCS 13	Rc d
2	BODY CAP (A)	1	SCS 13	
1	BODY	1	SCS 13	

NAME	NICE JOINT AND SCREWED ENDS REDUCED BORE LONG NECK TYPE MINI BALL VALVES		
TYPE	△ NJ-202NF	SIZE	20, 25Su
DNQ.No.	BAMS-0852	APPROVED BY	<i>H. Sanjo</i>
DATE	JAN. 21. 2002	CHECKED BY	<i>H. Sanjo</i>
SCALE	:	DESIGNED BY	
THIRD ANGLE PROJECTION METHOD		DRAWN BY	<i>M. Sakai</i>

△ 使用圧力, 使用温度追加	H24. 1. 13.
△ 検査圧力の変更	H23. 2. 9.
△ ワッシャ材質変更	H22. 2. 10.

O. N. INDUSTRIES LTD.