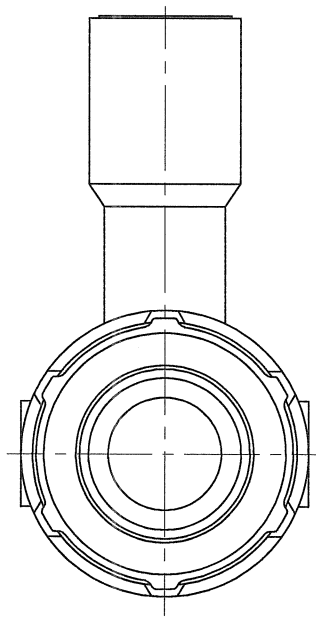
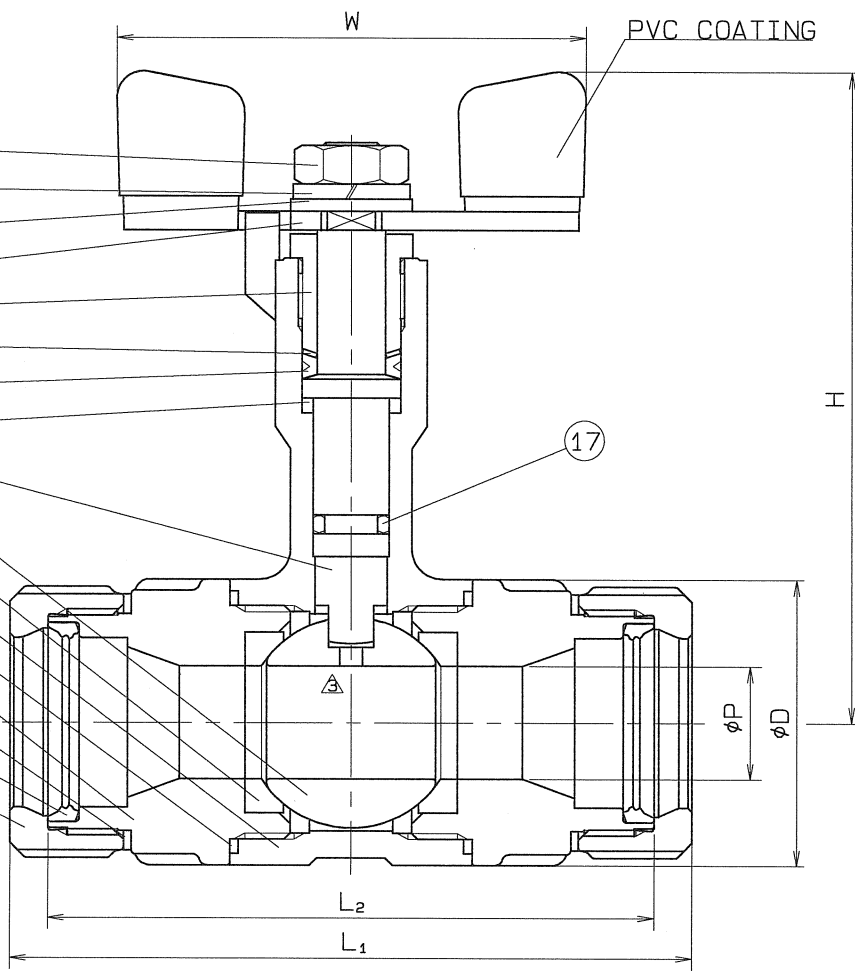
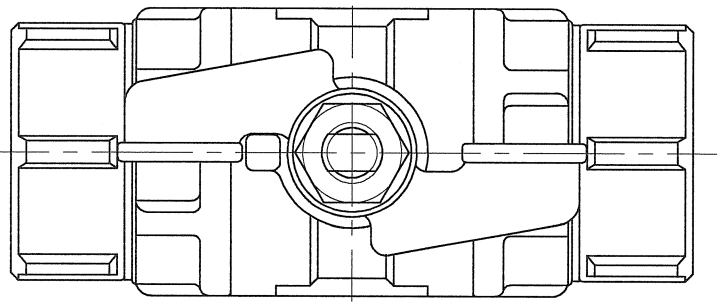


◇ 9280-SWAB 'OM' DMG

SIZE	P	L ₁	L ₂	H	W	D	Q, TY
△ 13 Su	10	78	70	83	60	33	
△ 20 Su	15	90	80	87	60	38	
△ 25 Su	20	97	85	94	80	47	
30 Su	20	99	85	94	80	54	



SPEC .		TEST PRESS.	
FLUID		SHELL	HYDRO 3.5 MPa (35.7 kgf/cm ²)
△ PRESS.	MAX 2.0 MPa (20.4 kgf/cm ²)	SEAT	AIR 0.6 MPa (6.1 kgf/cm ²)
△ TEMP.	MAX 100℃	AIR	MPa (kgf/cm ²)

△*SPECIAL TEFLON

No.	NAME OF PARTS	Q. TY	MATERIALS	REMARKS
18	PLAIN WASHER	1	SUS 304	
17	O RING	1	VITON	
△ 16	CONICAL WASHER	2	JFE443CT	
15	RUBBER PACKIG	2	SYNTHETIC RUBBER (HNBR)	
△ 14	NUT	2	SCS 13	
13	HEXAGON NUT	1	SUS 304	
12	SPRING WASHER	1	SUS 304	
11	HANDLE	1	SUS 304	
10	GLAND PACKING	1	P.T.F.E.	
9	BEARING	1	P.T.F.E.	CARBON FILLED
8	GASKET PACKING	2	P.T.F.E.	
△ 7	BALL SEAT	2	P.T.F.E.	*
△ 6	WASHER	1	SUS 304CSP	
△ 5	GLAND BUSHING	1	SCS 13	
△ 4	STEM	1	SUS 304	
△ 3	BALL DISC	1	SCS 13A	△ 13Su-SUS 304
2	BODY CAP	2	SCS 13	
1	BODY	1	SCS 13	

NAME	NICE JOINT ENDS REDUCED BORE LONG NECK TYPE MINI BALL VALVES		
TYPE	NJ-200	SIZE	13~30Su
DMG.No.	BAMS-0826 ◇	APPROVED BY	<i>[Signature]</i>
DATE	NOV. 6. 1999	CHECKED BY	<i>[Signature]</i>
SCALE	:	DESIGNED BY	<i>[Signature]</i>
THIRD ANGLE PROJECTION METHOD	DRAWN BY <i>[Signature]</i>		

△ 使用圧力, 使用温度追加	H24. 1. 13.
△ 検査圧力の変更	H23. 2. 9.
△ 図ワッシャ材質変更	H22. 2. 10.

O. N. INDUSTRIES LTD.