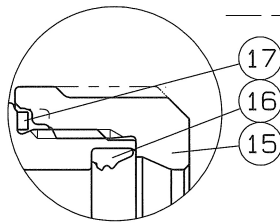
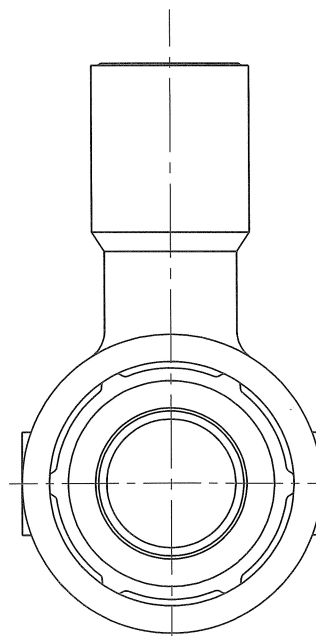
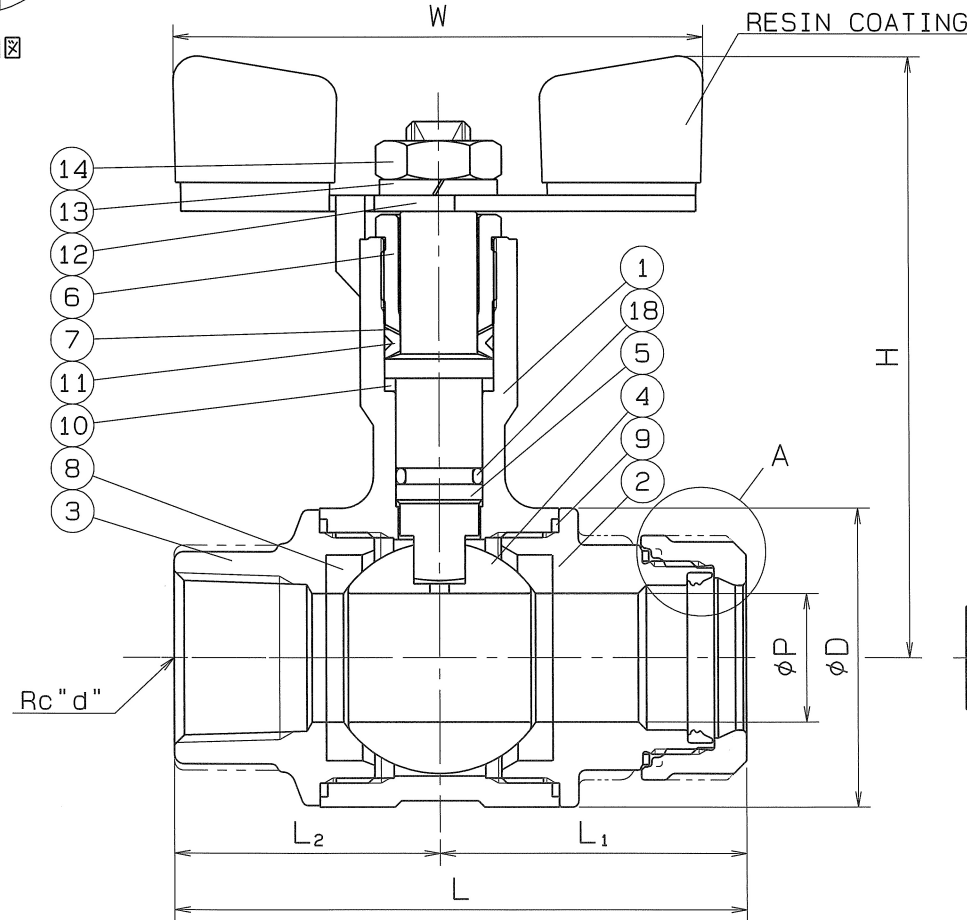
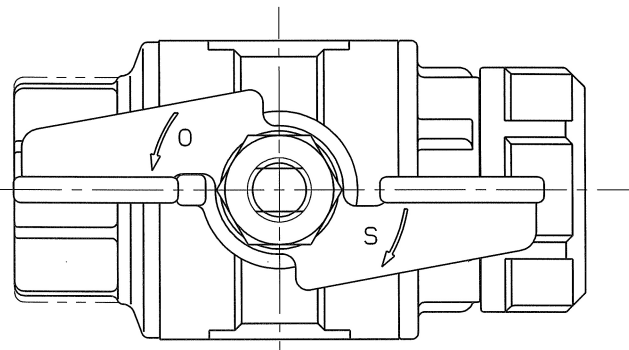


◇ 1100-SWV8X 0N 9M0

SIZE	d	P	L	L ₁	L ₂	H	W	D	Q, TY
20Sux3/4	Rc 3/4	20	88.5	47.5	41	94	80	47	



A部詳細図



SPEC.			TEST PRESS.		
FLUID			SHELL	HYDRO	3.5 MPa
PRESS.	MAX	MPa	SEAT	AIR	0.6 MPa
TEMP.	MAX	℃		AIR	MPa

PIPE THREADS CONFORM WITH "JIS B 0203"
*MODIFIED P.T.F.E.

18	O RING	1	FKM	
17	LOOSE STOPPER	1	SUS 304CSP	
16	RUBBER PACKING	1	SYNTHETIC RUBBER (HNBR)	
15	RATCHET NUT	1	SCS 13	
14	HEXAGON NUT	1	SUS 304	
13	SPRING WASHER	1	SUS 304	
12	HANDLE	1	SUS 304	
11	GLAND PACKING	1	P.T.F.E.	
10	BEARING	1	P.T.F.E.	CARBON FILLED
9	GASKET PACKING	2	P.T.F.E.	
8	BALL SEAT	2	P.T.F.E.	*
7	WASHER	1	SUS 304CSP	
6	GLAND BUSHING	1	SCS 13	
5	STEM	1	SUS 304	
4	BALL DISC	1	SCS 13A	
3	BODY CAP (B)	1	SCS 13	Rc "d"
2	BODY CAP (A)	1	SCS 13	
1	BODY	1	SCS 13	

No.	NAME OF PARTS	Q. TY	MATERIALS	REMARKS
NAME	NICE JOINT AND SCREWED ENDS FULL BORE LONG NECK TYPE BALL VALVES			
TYPE	NJX-222NF	SIZE	20Sux3/4	
DMG.No.	XBAMS-0011◇	DATE	MAR. 14. 2023.	
THIRD ANGLE PROJECTION METHOD		SCALE		

APPROVED	CHECKED	DESIGNED	DRAWN

O. N. INDUSTRIES LTD.