

◇ 9000-SWABX | Dwg. No. | XBAMS-0006

SIZE	P	L ₁	L ₂	H ₁	H ₂	W	D	Q, TY
13 Su	15	83	75	91	45	100	38	
20 Su	20	95	85	101	46	130	46.5	
25 Su	25	99	87	104	46	130	54	

SPEC.			TEST PRESS.	
FLUID			SHELL	HYDRO 3.5 MPa
PRESS.	MAX	MPa	SEAT	AIR 0.6 MPa
TEMP.	MAX	℃	AIR	MPa

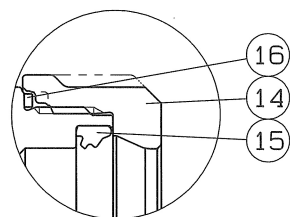
*MODIFIED P.T.F.E.

17	O RING	1	FKM	
16	LOOSE STOPPER	2	SUS 304CSP	
15	RUBBER PACKING	2	SYNTHETIC RUBBER (HNBR)	
14	RATCHET NUT	2	SCS 13	
13	HEXAGON NUT	1	SUS 304	
12	SPRING WASHER	1	SUS 304	
11	HANDLE	1	SUS 304	
10	GLAND PACKING	1	P.T.F.E.	
9	BEARING	1	P.T.F.E.	CARBON FILLED
8	GASKET PACKING	2	P.T.F.E.	
7	BALL SEAT	2	P.T.F.E.	*
6	WASHER	1	SUS 304CSP	
5	GLAND BUSHING	1	SCS 13	
4	STEM	1	SUS 304	
3	BALL DISC	1	SCS 13A	
2	BODY CAP	2	SCS 13	
1	BODY	1	SCS 13	

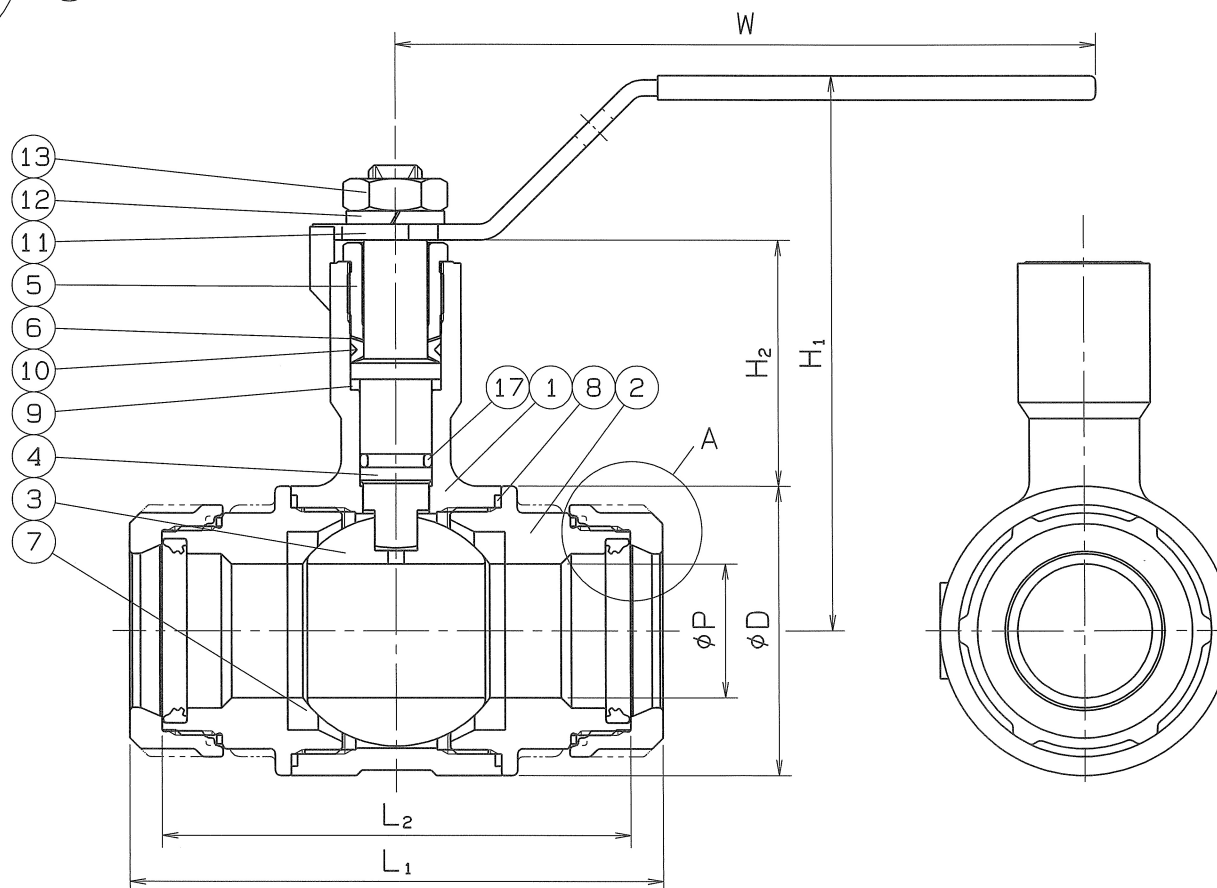
No.	NAME OF PARTS	Q. TY	MATERIALS	REMARKS
NAME	NICE JOINT ENDS FULL BORE LONG NECK TYPE BALL VALVES			
TYPE	NJX-220	SIZE	13~25Su	
Dwg. No.	XBAMS-0006◇	DATE	MAR. 14. 2023	
THIRD ANGLE PROJECTION METHOD		SCALE		
APPROVED	CHECKED	DESIGNED	DRAWN	

--	--	--	--

O. N. INDUSTRIES LTD.



A部詳細図



△		
△		
△		

◇ Z000-SWABX ON 9MO

SIZE	P	L ₁	L ₂	H ₁	H ₂	W	D	Q, TY
30 Su	32	114	100	119	44	170	67	
40 Su	40	125	107	125	43	170	80	

SPEC.			TEST PRESS.		
FLUID			SHELL	HYDRO	3.5 MPa
PRESS.	MAX	MPa	SEAT	AIR	0.6 MPa
TEMP.	MAX	℃		AIR	MPa

*MODIFIED P.T.F.E.

17	O RING	1	FKM	
16	LOOSE STOPPER	2	SUS 304CSP	
15	RUBBER PACKING	2	SYNTHETIC RUBBER (HNBR)	
14	RATCHET NUT	2	SCS 13	
13	HEXAGON NUT	1	SUS 304	
12	SPRING WASHER	1	SUS 304	
11	HANDLE	1	SUS 304	
10	GLAND PACKING	1	P.T.F.E.	
9	BEARING	1	P.T.F.E.	CARBON FILLED
8	GASKET PACKING	2	P.T.F.E.	
7	BALL SEAT	2	P.T.F.E.	*
6	WASHER	1	SUS 304CSP	
5	GLAND BUSHING	1	SUS 304	
4	STEM	1	SUS 304	
3	BALL DISC	1	SCS 13A	
2	BODY CAP	2	SCS 13	
1	BODY	1	SCS 13	

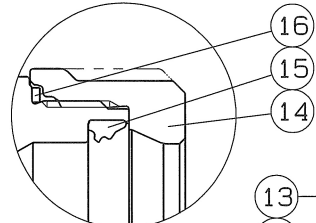
No.	NAME OF PARTS	Q.TY	MATERIALS	REMARKS
NAME	NICE JOINT ENDS FULL BORE LONG NECK TYPE BALL VALVES			
TYPE	NJX-220	SIZE	30, 40Su	
DWG.No.	XBAMS-0007◇	DATE	MAR. 14. 2023.	
THIRD ANGLE PROJECTION METHOD		SCALE		
APPROVED	CHECKED	DESIGNED	DRAWN	

--	--	--	--

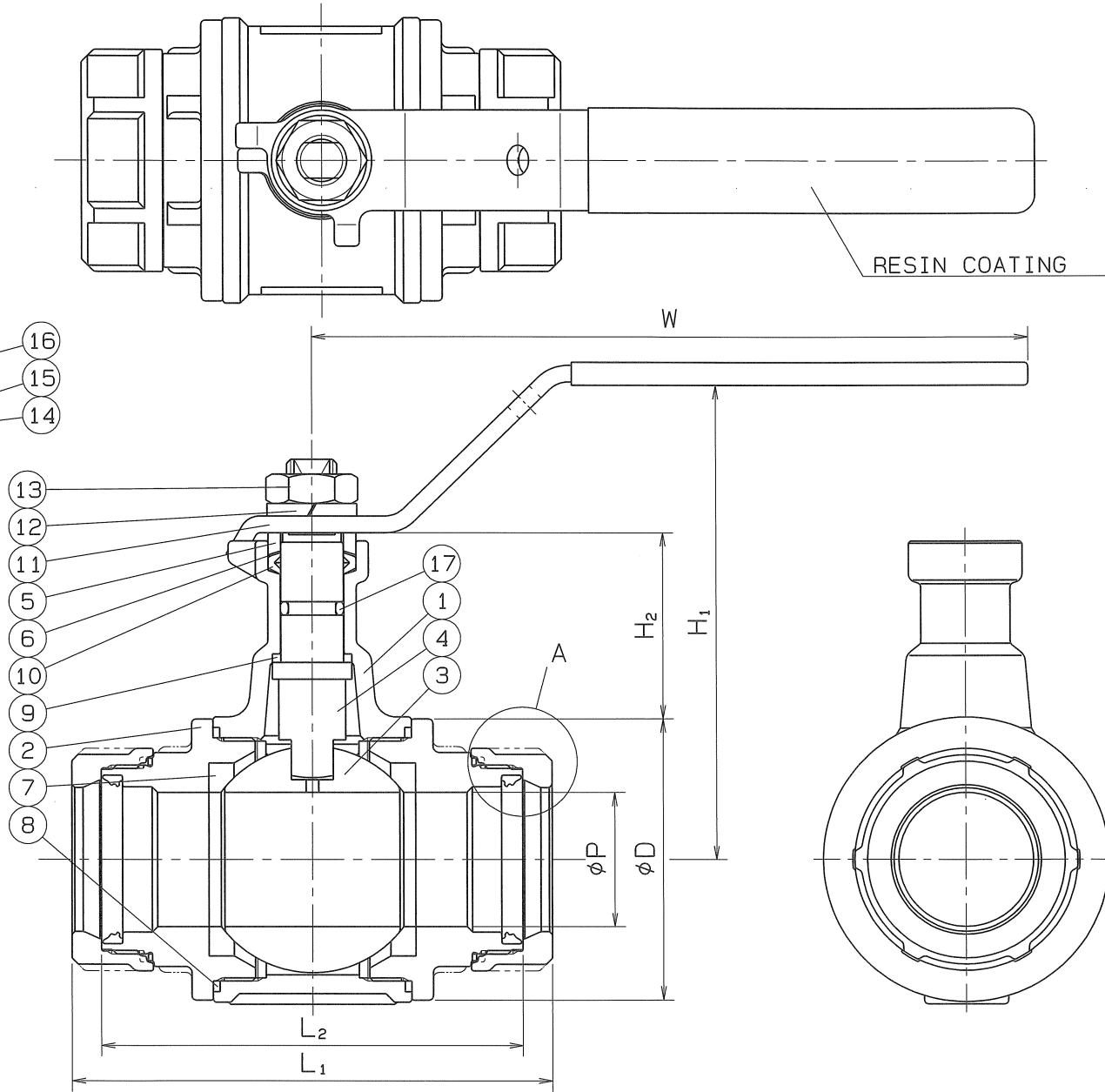
O. N. INDUSTRIES LTD.

A
B
C
D
E
F

A
B
C
D
E
F



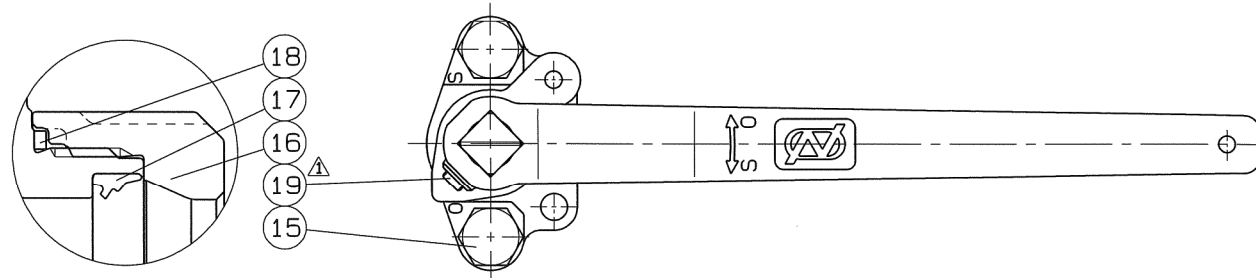
A部詳細図



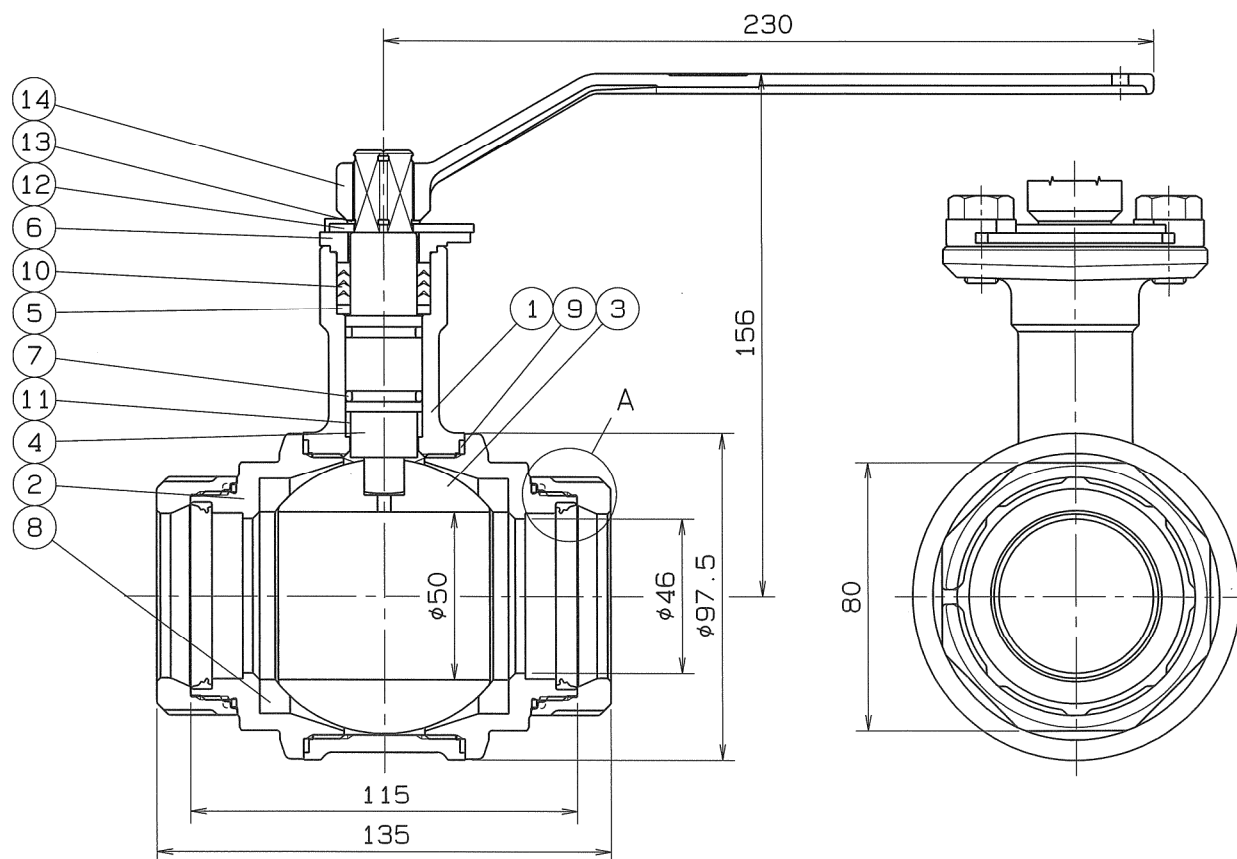
△		
△		
△		

8000-SWVBX 'ON' QND

Q.TY :



A部詳細図



SPEC.			TEST PRESS.	
FLUID		MPa	SHELL	HYDRO 3.5 MPa
PRESS.	MAX	MPa	SEAT	AIR 0.6 MPa
TEMP.	MAX	℃	AIR	MPa

*MODIFIED P.T.F.E.

19	HEXAGON SOCKET SET SCREW	1	SUS 304	M6×10L
18	LOOSE STOPPER	2	SUS 304CSP	
17	RUBBER PACKING	2	SYNTHETIC RUBBER (HNBR)	
16	RATCHET NUT	2	SCS 13	
15	GLAND BOLT	2	SUS 304	
14	HANDLE	1	SCS 13	
13	STOP RING	1	SUS 304	
12	STOPPER	1	SUS 304	
11	STEM BEARING	1	P.T.F.E.	GLASS FILLED
10	GLAND PACKING	1set	P.T.F.E.	
9	GASKET PACKING	2	P.T.F.E.	
8	BALL SEAT	2	P.T.F.E.	*
7	O RING	2	FKM	P18
6	GLAND	1	SCS 13	
5	THRUST RING	1	SUS 329J1	
4	STEM	1	SUS 304	
3	BALL DISC	1	SCS 13A	
2	BODY CAP	2	SCS 13	
1	BODY	1	SCS 13	

NICE JOINT ENDS				
LONG NECK TYPE BALL VALVE				
NAME	NJX-220	SIZE	50Su	
TYPE		DATE	MAR. 14. 2023.	
DWG.No.	XBAMS-0008	SCALE		
THIRD ANGLE PROJECTION METHOD				
APPROVED	CHECKED	DESIGNED	DRAWN	
小島	小島	山島	植木	

O. N. INDUSTRIES LTD.

部品記号追加	2025.6.18.
--------	------------