

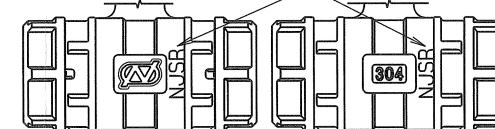
◇ 9E00-SWABX Dwg. No.

NJSR

| SIZE | P | L ₁ | L ₂ | H | W | D | Q. TY |
|-------|----|----------------|----------------|----|----|----|-------|
| 13 Su | 10 | 78 | 70 | 46 | 60 | 33 | |
| 20 Su | 15 | 90 | 80 | 50 | 60 | 38 | |
| 25 Su | 20 | 97 | 85 | 58 | 80 | 47 | |

| SPEC. | | | TEST PRESS. | | |
|--------|-----|-----|-------------|-----------|-----|
| FLUID | | | SHELL | HYDRO 3.5 | MPa |
| PRESS. | MAX | MPa | SEAT | AIR 0.6 | MPa |
| TEMP. | MAX | ℃ | AIR | | MPa |

"NJSR" 赤色スタンプ

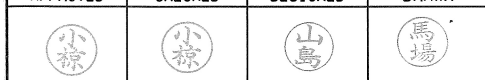


外観図

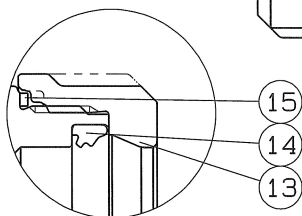
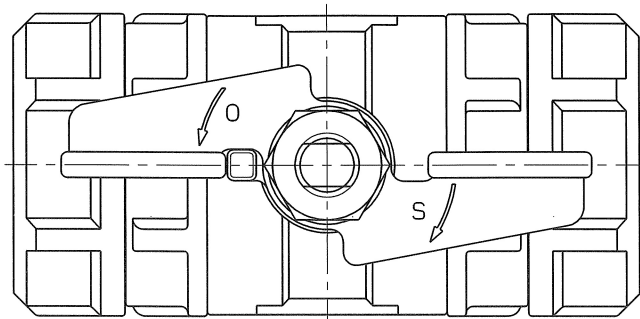
*MODIFIED P.T.F.E.

| 15 | LOOSE STOPPER | 2 | SUS 304CSP | |
|-----|----------------|-------|-------------------------|---------------|
| 14 | RUBBER PACKING | 2 | SYNTHETIC RUBBER (NJSR) | |
| 13 | RATCHET NUT | 2 | SCS 13 | |
| 12 | HEXAGON NUT | 1 | SUS 304 | |
| 11 | SPRING WASHER | 1 | SUS 304 | |
| 10 | HANDLE | 1 | SUS 304 | |
| 9 | THRUST BEARING | 1 | P.T.F.E. | CARBON FILLED |
| 8 | THRUST PACKING | 1 | P.T.F.E. | CARBON FILLED |
| 7 | GASKET PACKING | 2 | P.T.F.E. | |
| 6 | BALL SEAT | 2 | P.T.F.E. | * |
| 5 | GLAND | 1 | SUS 316 | |
| 4 | STEM | 1 | SUS 316 | |
| 3 | BALL DISC | 1 | SCS 13A | 13Su-SUS 304 |
| 2 | BODY CAP | 2 | SCS 13 | |
| 1 | BODY | 1 | SCS 13 | |
| No. | NAME OF PARTS | Q. TY | MATERIALS | REMARKS |

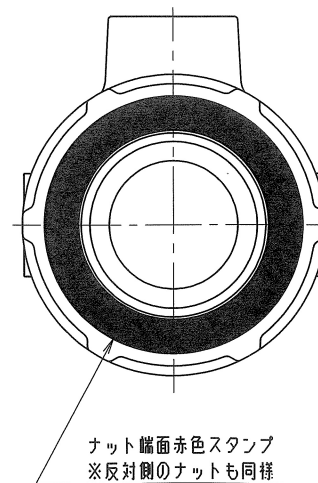
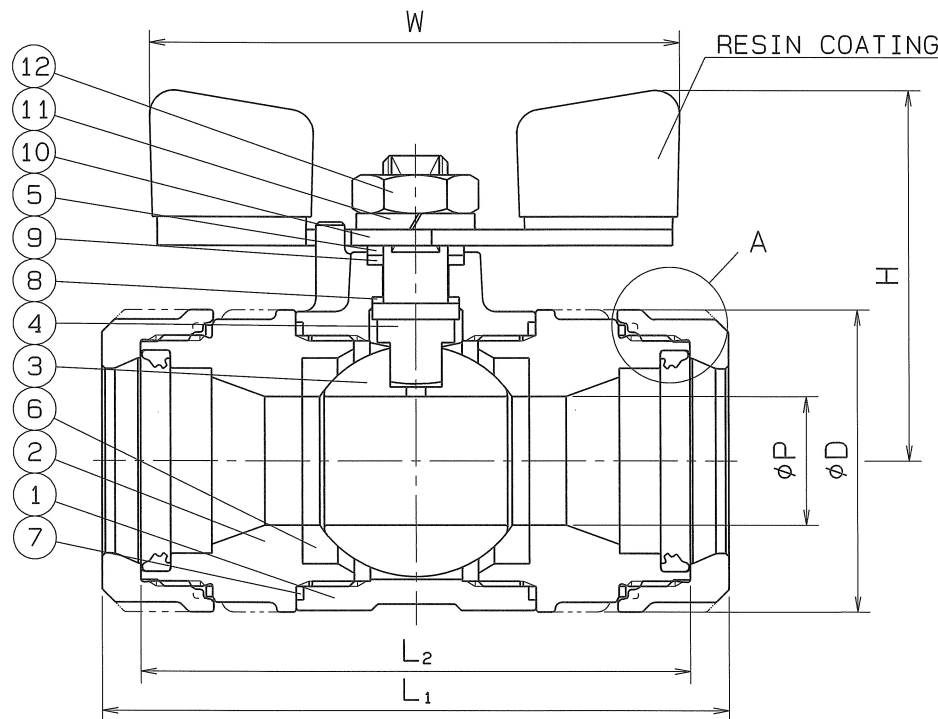
| | | | |
|-------------------------------|--|----------|--------------|
| NAME | NICE JOINT ENDS REDUCED BORE BALL VALVES | | |
| TYPE | NJX-310 | SIZE | 13~25Su |
| DWG. No. | XBAMS-0036◇ | DATE | NOV. 6. 2023 |
| THIRD ANGLE PROJECTION METHOD | SCALE | | |
| APPROVED | CHECKED | DESIGNED | DRAWN |



O. N. INDUSTRIES LTD.



A部詳細図



ナット端面赤色スタンプ
※反対側のナットも同様