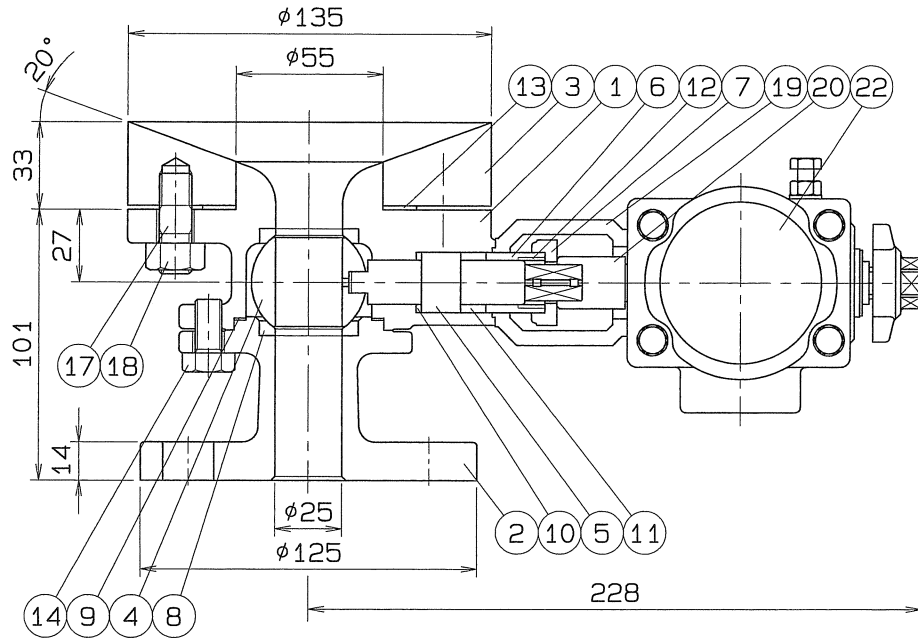
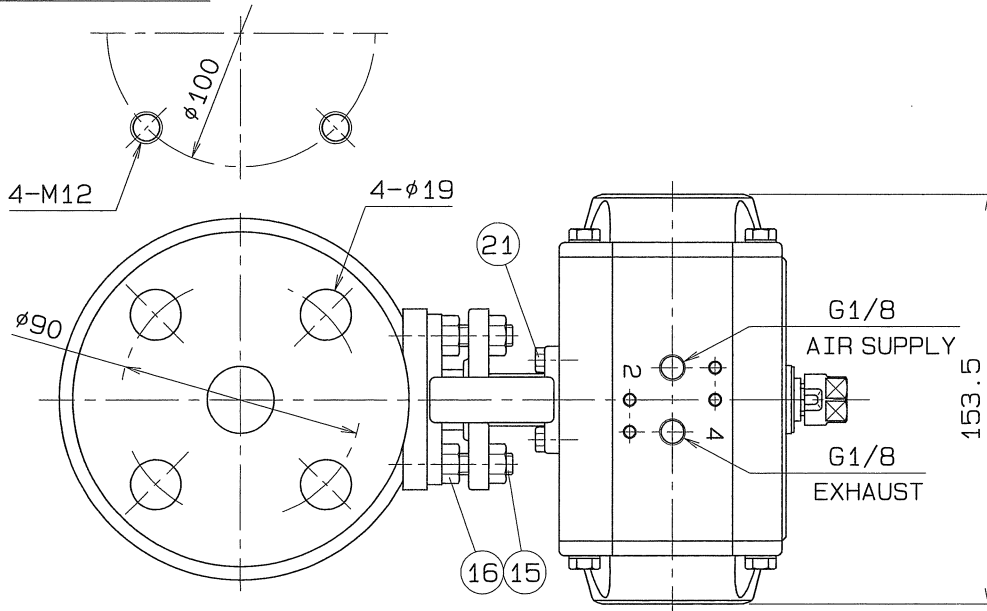


◇ Dwg. No. BAAS-5206



TANK PAD SIDE



SPEC.		TEST PRESSURE	
FLUID	清水	SHELL	HYDRO 2.1 MPa (21.4kgf/cm ²)
PRESS.	0.98 MPa (10 kgf/cm ²) 以下	SEAT	AIR 0.6 MPa (6.1kgf/cm ²)
TEMP.	常温		AIR (MPa (kgf/cm ²))

注) 上記の流体条件と異なる場合
シリンダサイズが変更になる場合があります。

TORQUE CYLINDER

TYPE	AT101US08		
ACTION	SINGLE	OPERATION PROPERTY	ON-OFF
SUPPLY PRESSURE	0.39 MPa (4 kgf/cm ²)	HAND DEVICE	NOTHING

OPERATION

PORT2 AIR SUPPLY : LEFT TURN - VALVE OPEN
PORT2 AIR FAILURE : RIGHT TURN - VALVE SHUT

Q. TY :

END FLANGED : JIS B 2220

24	CAP HEAD BOLT	1	SUS 304	
23	INDICATOR	1	SCS 13	
22	TORQUE CYLINDER	1		
21	HEXAGON BOLT	4	SUS 304	
20	COUPLING	1	SCS 13	
19	BRACKET	1	SCS 13	
18	HEXAGON NUT	4	SUS 304	
17	STUD BOLT	4	SUS 304	
16	HEXAGON NUT	4	SUS 304	
15	GLAND BOLT	2	SUS 304	
14	BODY CAP BOLT	4	SUS 304	
13	PAD PACKING	1	P. T. F. E.	GLASS FILLED
12	STEM BEARING	1	P. T. F. E.	GLASS FILLED
11	GLAND PACKING	1set	P. T. F. E.	
10	THRUST BEARING	1	P. T. F. E.	GLASS FILLED
9	GASKET PACKING	1	P. T. F. E.	
8	BALL SEAT	2	P. T. F. E.	GLASS FILLED
7	GLAND	1	SCS 13	
6	GLAND SLEEVE	1	SUS 316	
5	STEM	1	SUS 316	
4	BALL DISC	1	SCS 14A	
3	TANK PAD	1	SCS 14A	
2	BODY CAP	1	SCS 14A	
1	BODY	1	SCS 14A	

No.	NAME OF PARTS	Q. TY	MATERIALS	REMARKS
NAME JIS 10K FLANGED END TORQUE CYLINDER OPE. TANK BOTTOM BALL VALVES				
TYPE		N-765HYS2	SIZE	25A
Dwg. No.		BAAS-5206	APPROVED BY	K. Yamoto
DATE		APR. 7, 2011	CHECKED BY	H. Asakura
SCALE			DESIGNED BY	
THIRD ANGLE PROJECTION METHOD			DRAWN BY	H. Miura

O. N. INDUSTRIES LTD.