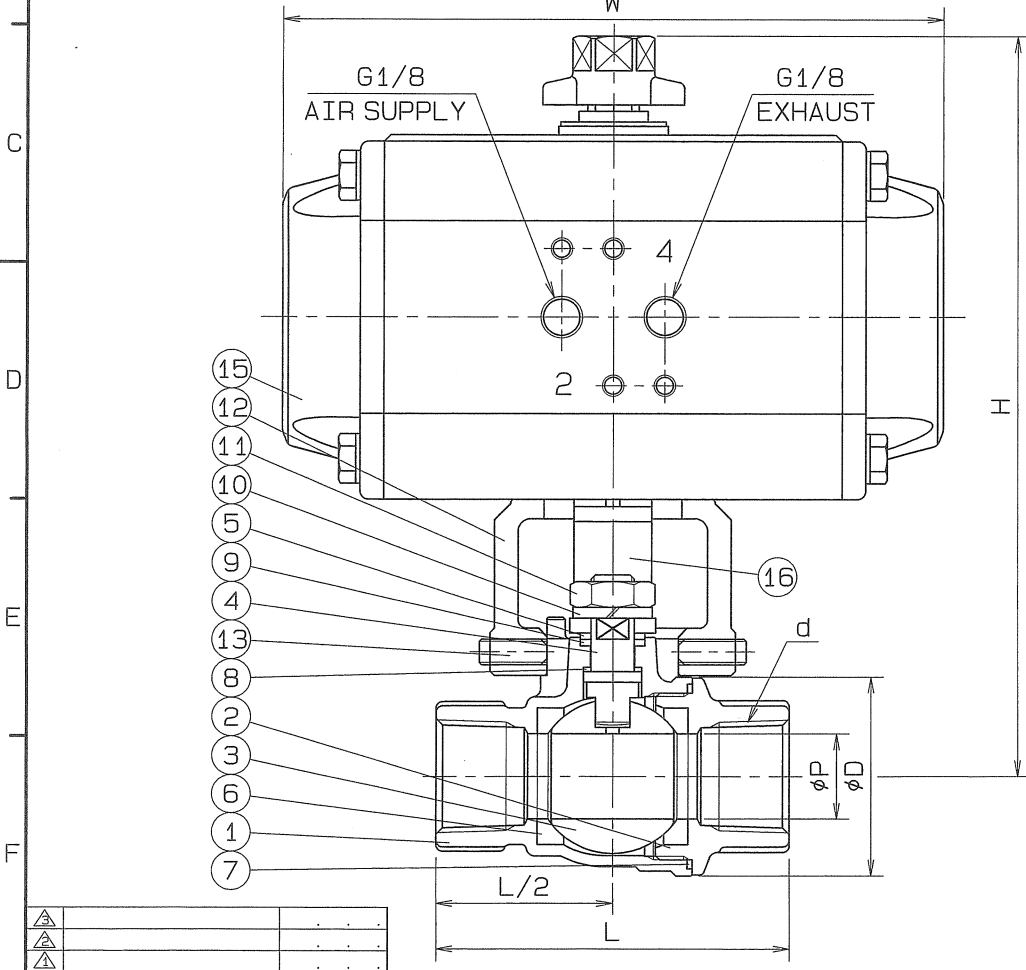


SIZE	P	L	PIPE THREADS		H	D	W	F	K	S	M	CYLINDER SIZE	Q, TY
			d										
1/4	8	55	Rc	1/4	142	27	135.5	42	29	18	43	AT051US4	
3/8	10	57	Rc	3/8	143	30	135.5	42	29	22	43	AT051US4	
1/2	15	72	Rc	1/2	147	38	135.5	42	29	27	43	AT051US4	
3/4	20	82	Rc	3/4	174	46.5	153.5	48.5	36	33	50	AT101US08	
1	25	92	Rc	1	178	54	153.5	48.5	36	40	50	AT101US08	



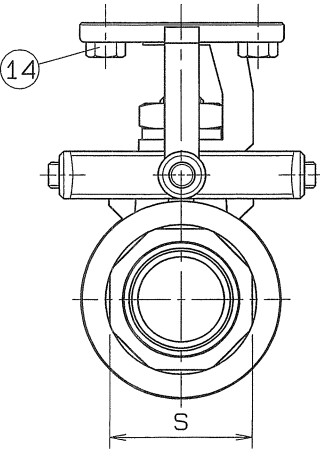
SPEC.		TEST PRESS.	
FLUID	清水	SHELL	2.1 MPa HYDRO (21.4kgf/cm <sup>2</sup> )
PRESS.	0.98 MPa (10 kgf/cm <sup>2</sup> ) 以下	SEAT	0.6 MPa AIR (6.1kgf/cm <sup>2</sup> )
TEMP.	常温	AIR	MPa ( kgf/cm <sup>2</sup> )

注) 上記の流体条件と異なる場合  
シリンダサイズが変更になる場合があります。

TORQUE CYLINDER			
TYPE	ATUS		
ACTION	SINGLE	OPERATION PROPERTY	ON-OFF
SUPPLY PRESSURE	0.39 MPa (4 kgf/cm <sup>2</sup> )	HAND DEVICE	NOTHING

OPERATION  
PORT2 AIR SUPPLY : LEFT TURN - VALVE OPEN  
PORT2 AIR FAILURE : RIGHT TURN - VALVE SHUT

PIPE THREADS CONFORM WITH "JIS B 0203" TAPER  
No.3 1/4, 3/8B MATERIAL : SUS 316



No.	NAME OF PARTS	Q. TY	MATERIALS	REMARKS
18	CAP HEAD BOLT	1	SUS 304	
17	INDICATOR	1	SCS 13	
16	COUPLING	1	SCS 13	
15	TORQUE CYLINDER	1		
14	HEXAGON BOLT	4	SUS 304	
13	SET BOLT	4	SUS 304	
12	BRACKET	1	SCS 13	
11	HEXAGON NUT	1	SUS 304	
10	SPRING WASHER	1	SUS 304	
9	THRUST BEARING	1	P.T.F.E.	CARBON FILLED
8	THRUST PACKING	1	P.T.F.E.	CARBON FILLED
7	GASKET PACKING	1	P.T.F.E.	
6	BALL SEAT	2	P.T.F.E.	
5	GLAND	1	SUS 316	
4	STEM	1	SUS 316	
3	BALL DISC	1	SCS 14A	
2	BODY CAP	1	SCS 14	
1	BODY	1	SCS 14	

NAME JIS10K SCREWED ENDS (SINGLE ACTION)  
CYLINDER OPERATED MINI BALL VALVES  
TYPE N-620HYS2 SIZE 1/4~1B  
DNG.No. BAAS-5189 ◊ APPROVED BY *[Signature]*  
DATE APR. 7.2011 CHECKED BY *[Signature]*  
SCALE : DESIGNED BY *R. Matsuki*  
THIRD ANGLE PROJECTION METHOD DRAWN BY