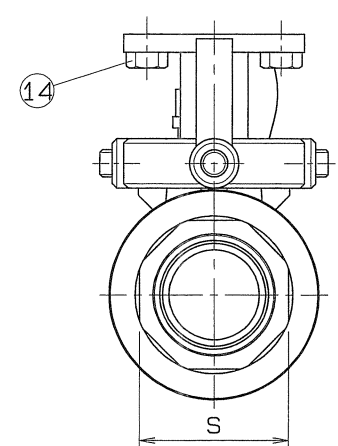
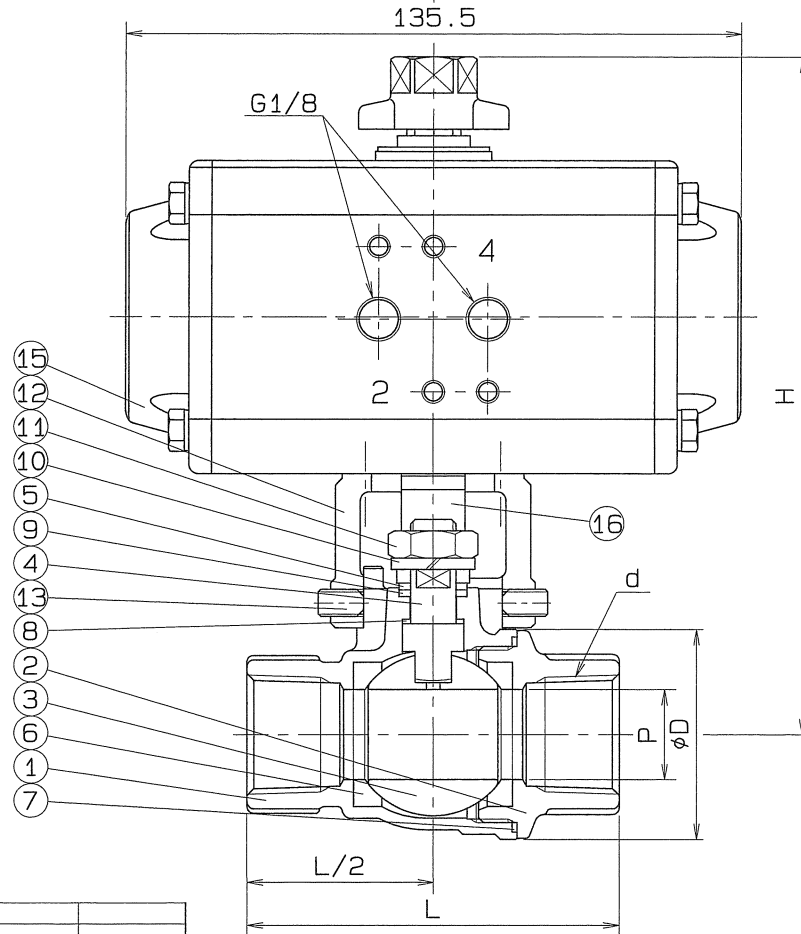
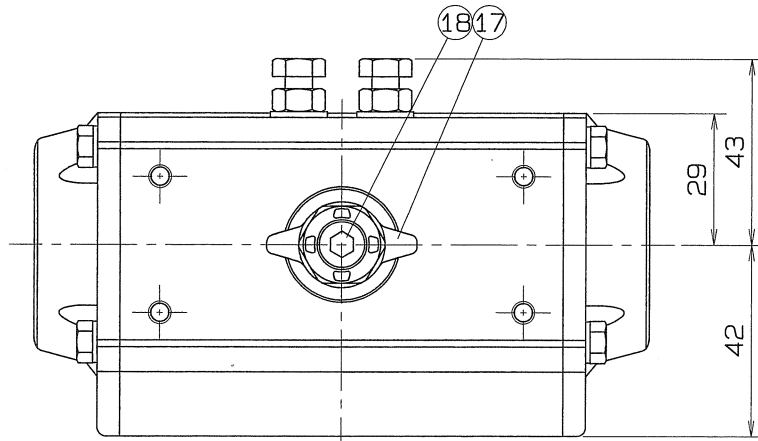


◇ 891G-5168 DWG.No. BAAS-5168



SIZE	P	L	PIPE THREADS		H	D	S	Q, TY
			d					
1/4	8	55	Rc	1/4	142	27	18	
3/8	10	57	Rc	3/8	143	30	22	
1/2	15	72	Rc	1/2	147	38	27	
3/4	20	82	Rc	3/4	151	46.5	33	
1	25	92	Rc	1	155	54	40	

SPEC.		TEST PRESS.	
FLUID	清水	SHELL	HYDRO 2.1 MPa (21.4kgf/cm ²)
PRESS.	0.98 MPa (10 kgf/cm ²) 以下	SEAT	AIR 0.6 MPa (6.1kgf/cm ²)
TEMP.	常温		AIR (MPa (kgf/cm ²))

注) 上記の流体条件と異なる場合
シリンダサイズが変更になる場合があります。

TORQUE CYLINDER

TYPE	AT051UD		
ACTION	DOUBLE	OPERATION PROPERTY	ON-OFF
SUPPLY PRESSURE	0.39 MPa (4 kgf/cm ²)	HAND DEVICE	NOTHING

OPERATION

PORT2 AIR SUPPLY : LEFT TURN - VALVE OPEN
PORT4 AIR SUPPLY : RIGHT TURN - VALVE SHUT
PIPE THREADS CONFORM WITH 'JIS B 0203' TAPER
No.3 1/4, 3/8B MATERIAL : SUS 316

18	CAP HEAD BOLT	1	SUS 304	
17	INDICATOR	1	SCS 13	
16	COUPLING	1	SCS 13	
15	TORQUE CYLINDER	1		
14	HEXAGON BOLT	4	SUS 304	
13	SET BOLT	4	SUS 304	
12	BRACKET	1	SCS 13	
11	HEXAGON NUT	1	SUS 304	
10	SPRING WASHER	1	SUS 304	
9	THRUST BEARING	1	P.T.F.E.	CARBON FILLED
8	THRUST PACKING	1	P.T.F.E.	CARBON FILLED
7	GASKET PACKING	1	P.T.F.E.	
6	BALL SEAT	2	P.T.F.E.	
5	GLAND	1	SUS 316	
4	STEM	1	SUS 316	
3	BALL DISC	1	SCS 14A	
2	BODY CAP	1	SCS 14	
1	BODY	1	SCS 14	

No.	NAME OF PARTS	Q.TY	MATERIALS	REMARKS
NAME JIS10K SCREWED ENDS (DOUBLE ACTION) CYLINDER OPERATED MINI BALL VALVES				
TYPE N-620HY2		SIZE 1/4~1B		
DWG.No.	BAAS-5168 ◇	APPROVED BY	K. Tsumoto	
DATE	FEB. 21. 2011	CHECKED BY	H. Miura	
SCALE	:	DESIGNED BY		
THIRD ANGLE PROJECTION METHOD		DRAWN BY	H. Miura	