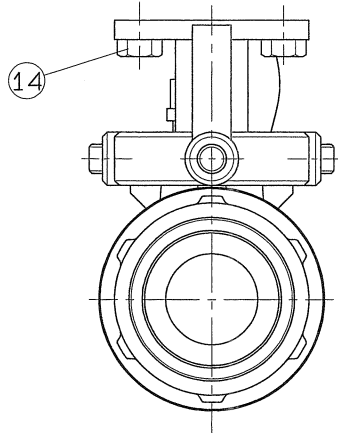
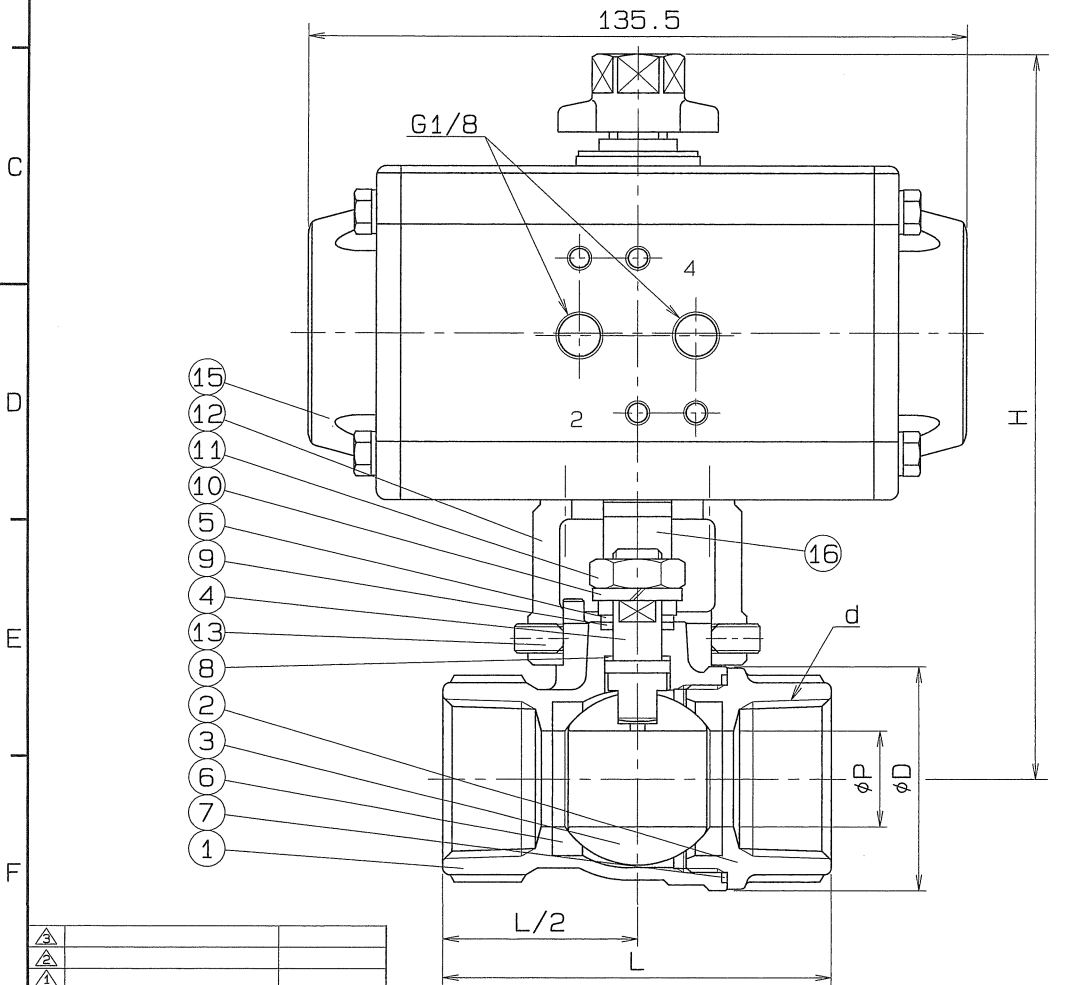
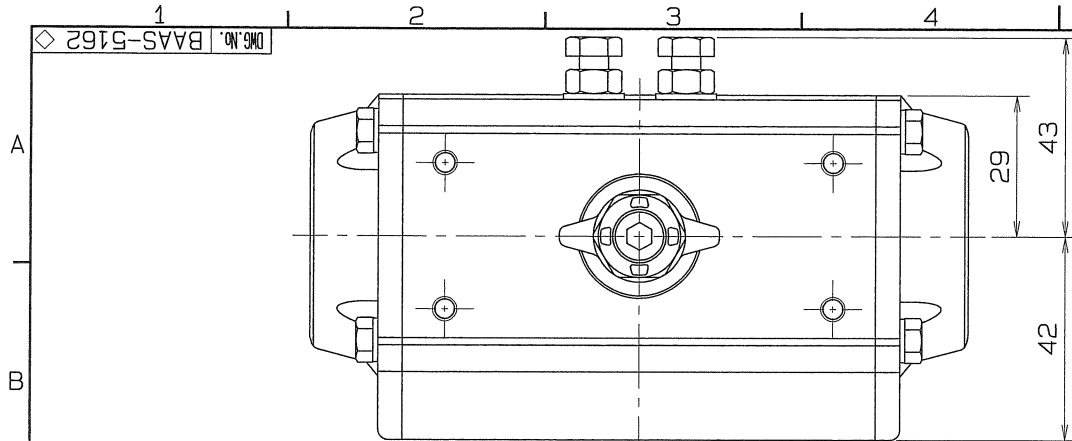


◇ DWG. No. BAAS-5162



SIZE	P	L	PIPE THREADS	H	D	Q, TY
			d			
3/8	8	55	Rc 3/8	142	27	
1/2	10	60	Rc 1/2	143	30	
3/4	15	70	Rc 3/4	147	38	
1	20	80	Rc 1	151	46.5	
1.1/4	25	90	Rc 1.1/4	156	56	

SPEC.		TEST PRESS.	
FLUID	清水	SHELL	HYDRO 2.1 MPa (21.4kgf/cm <sup>2</sup> )
PRESS.	0.98 MPa (10 kgf/cm <sup>2</sup> ) 以下	SEAT	AIR 0.6 MPa (6.1kgf/cm <sup>2</sup> )
TEMP.	常温	AIR	MPa ( kgf/cm <sup>2</sup> )

注) 上記の流体条件と異なる場合  
シリンダサイズが変更になる場合があります。

TORQUE CYLINDER

TYPE	AT051UD		
ACTION	DOUBLE	OPERATION PROPERTY	ON-OFF
SUPPLY PRESSURE	0.39 MPa (4 kgf/cm <sup>2</sup> )	HAND DEVICE	NOTHING

OPERATION

PORT2 AIR SUPPLY : LEFT TURN - VALVE OPEN  
PORT4 AIR SUPPLY : RIGHT TURN - VALVE SHUT

PIPE THREADS CONFORM WITH 'JIS B 0203' TAPER  
No.3 3/8, 1/2B MATERIAL : SUS 304

18	CAP HEAD BOLT	1	SUS 304	
17	INDICATOR	1	SCS 13	
16	COUPLING	1	SCS 13	
15	TORQUE CYLINDER	1		
14	HEXAGON BOLT	4	SUS 304	
13	SET BOLT	4	SUS 304	
12	BRACKET	1	SCS 13	
11	HEXAGON NUT	1	SUS 304	
10	SPRING WASHER	1	SUS 304	
9	THRUST BEARING	1	P.T.F.E.	CARBON FILLED
8	THRUST PACKING	1	P.T.F.E.	CARBON FILLED
7	GASKET PACKING	1	P.T.F.E.	
6	BALL SEAT	2	P.T.F.E.	
5	GLAND	1	SUS 316	
4	STEM	1	SUS 316	
3	BALL DISC	1	SCS 14A	
2	BODY CAP	1	SCS 14	
1	BODY	1	SCS 14	

No.	NAME OF PARTS	Q. TY	MATERIALS	REMARKS
NAME	JIS10K SCREWED ENDS (DOUBLE ACTION) CYLINDER OPERATED MINI BALL VALVES			
TYPE	N-610HY2	SIZE	3/8~1.1/4B	
DWG.No.	BAAS-5162 ◇	APPROVED BY	<i>K. Miura</i>	
DATE	FEB. 21. 2011.	CHECKED BY	<i>A. Kishida</i>	
SCALE	:	DESIGNED BY		
THIRD ANGLE PROJECTION METHOD		DRAWN BY	<i>K. Miura</i>	

**O. N. INDUSTRIES LTD.**