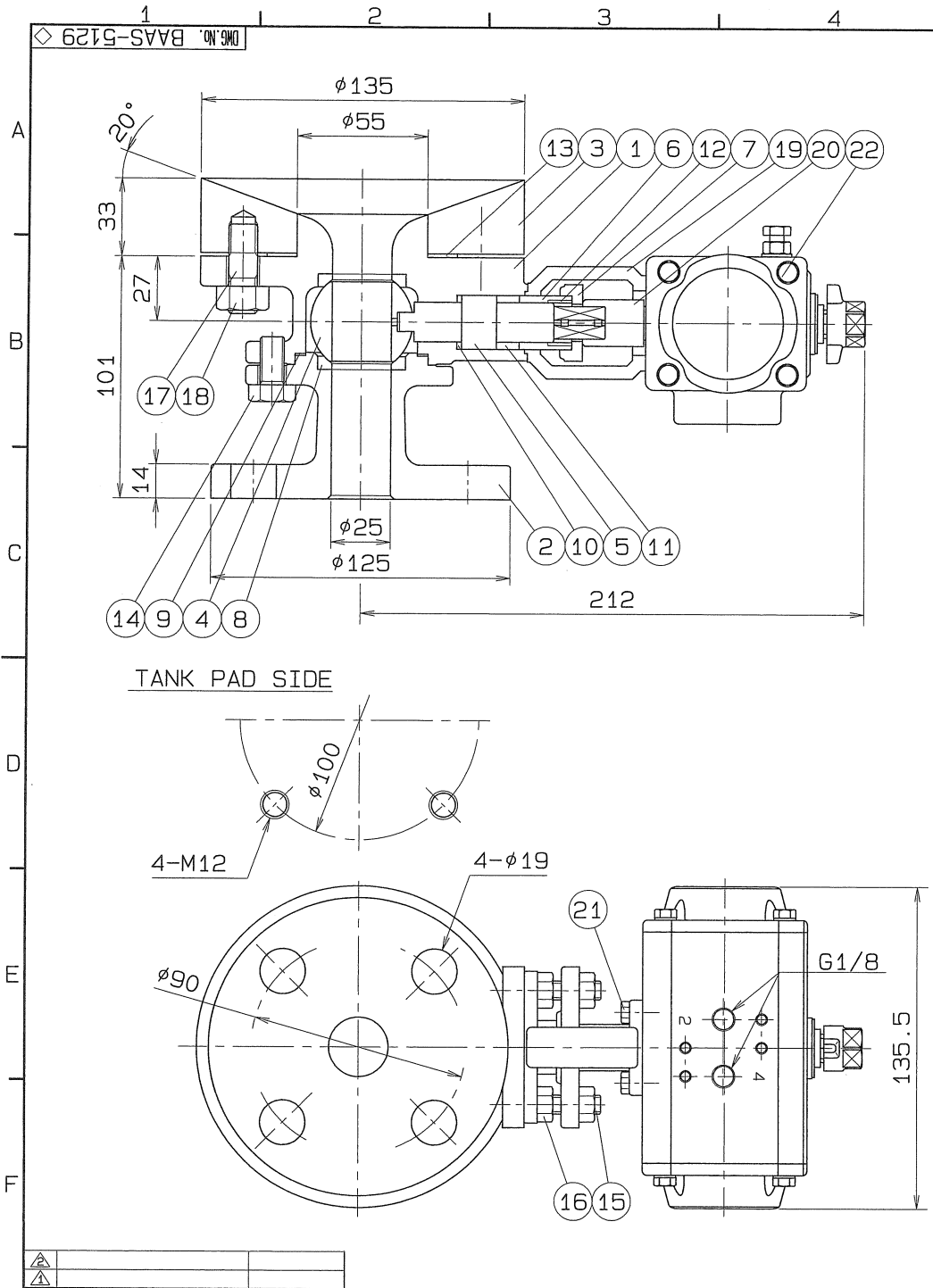


◇ DWG. No. BAAS-5129



SPEC.		TEST PRESSURE	
FLUID	清水	SHELL	HYDRO 2.1 MPa (21.4kgf/cm <sup>2</sup> )
PRESS.	0.98 MPa (10 kgf/cm <sup>2</sup> ) 以下	SEAT	AIR 0.6 MPa (6.1kgf/cm <sup>2</sup> )
TEMP.	常温		AIR ( MPa ( kgf/cm <sup>2</sup> ))

注) 上記の流体条件と異なる場合  
シリンダサイズが変更になる場合があります。

TORQUE CYLINDER

TYPE	ACTION		OPERATION PROPERTY	HAND DEVICE
AT051UD	DOUBLE		ON-OFF	NOTHING
SUPPLY PRESSURE	0.39 MPa (4 kgf/cm <sup>2</sup> )			

OPERATION  
PORT2 AIR SUPPLY : LEFT TURN - VALVE OPEN  
PORT4 AIR SUPPLY : RIGHT TURN - VALVE SHUT

Q.TY :  
END FLANGED : JIS B 2220

No.	NAME OF PARTS	Q.TY	MATERIALS	REMARKS
24	CAP HEAD BOLT	1	SUS 304	
23	INDICATOR	1	SCS 13	
22	TORQUE CYLINDER	1		
21	HEXAGON BOLT	4	SUS 304	
20	COUPLING	1	SCS 13	
19	BRACKET	1	SCS 13	
18	HEXAGON NUT	4	SUS 304	
17	STUD BOLT	4	SUS 304	
16	HEXAGON NUT	4	SUS 304	
15	GLAND BOLT	2	SUS 304	
14	BODY CAP BOLT	4	SUS 304	
13	PAD PACKING	1	P.T.F.E.	GLASS FILLED
12	STEM BEARING	1	P.T.F.E.	GLASS FILLED
11	GLAND PACKING	1SET	P.T.F.E.	
10	THRUST BEARING	1	P.T.F.E.	GLASS FILLED
9	GASKET PACKING	1	P.T.F.E.	
8	BALL SEAT	2	P.T.F.E.	GLASS FILLED
7	GLAND	1	SCS 13	
6	GLAND SLEEVE	1	SUS 316	
5	STEM	1	SUS 316	
4	BALL DISC	1	SCS 14A	
3	TANK PAD	1	SCS 14A	
2	BODY CAP	1	SCS 14A	
1	BODY	1	SCS 14A	

NAME	JIS 10K FLANGED END TORQUE CYLINDER OPE. TANK BOTTOM BALL VALVES
TYPE	N-765HY2
SIZE	25A
DWG. No.	BAAS-5129 ◇
DATE	FEB. 18, 2011
SCALE	
THIRD ANGLE PROJECTION METHOD	
APPROVED BY	H. Iwamoto
CHECKED BY	H. Adachi
DESIGNED BY	
DRAWN BY	K. Tsubota

**O. N. INDUSTRIES LTD.**