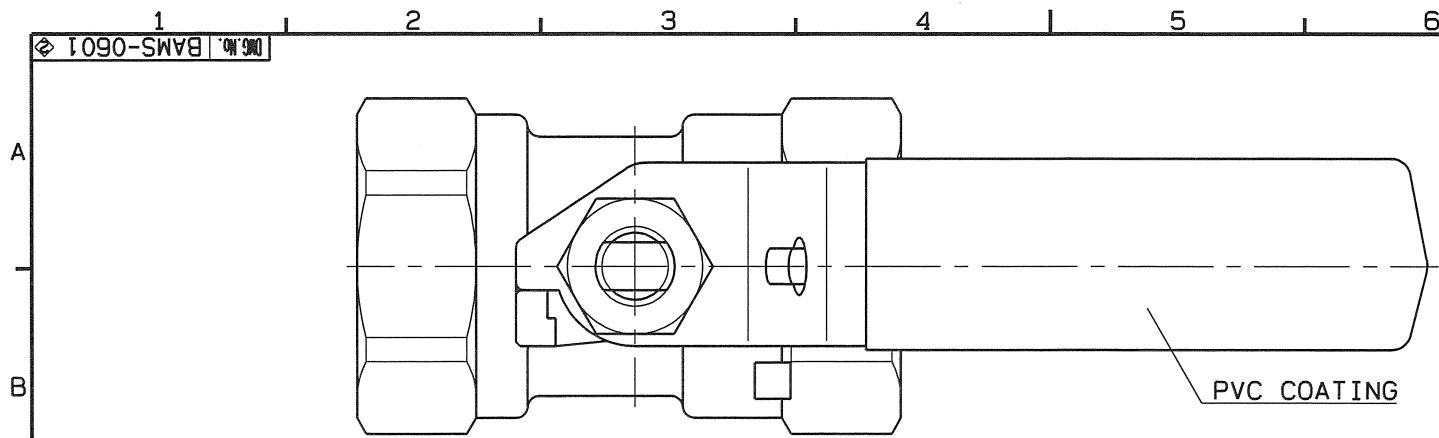
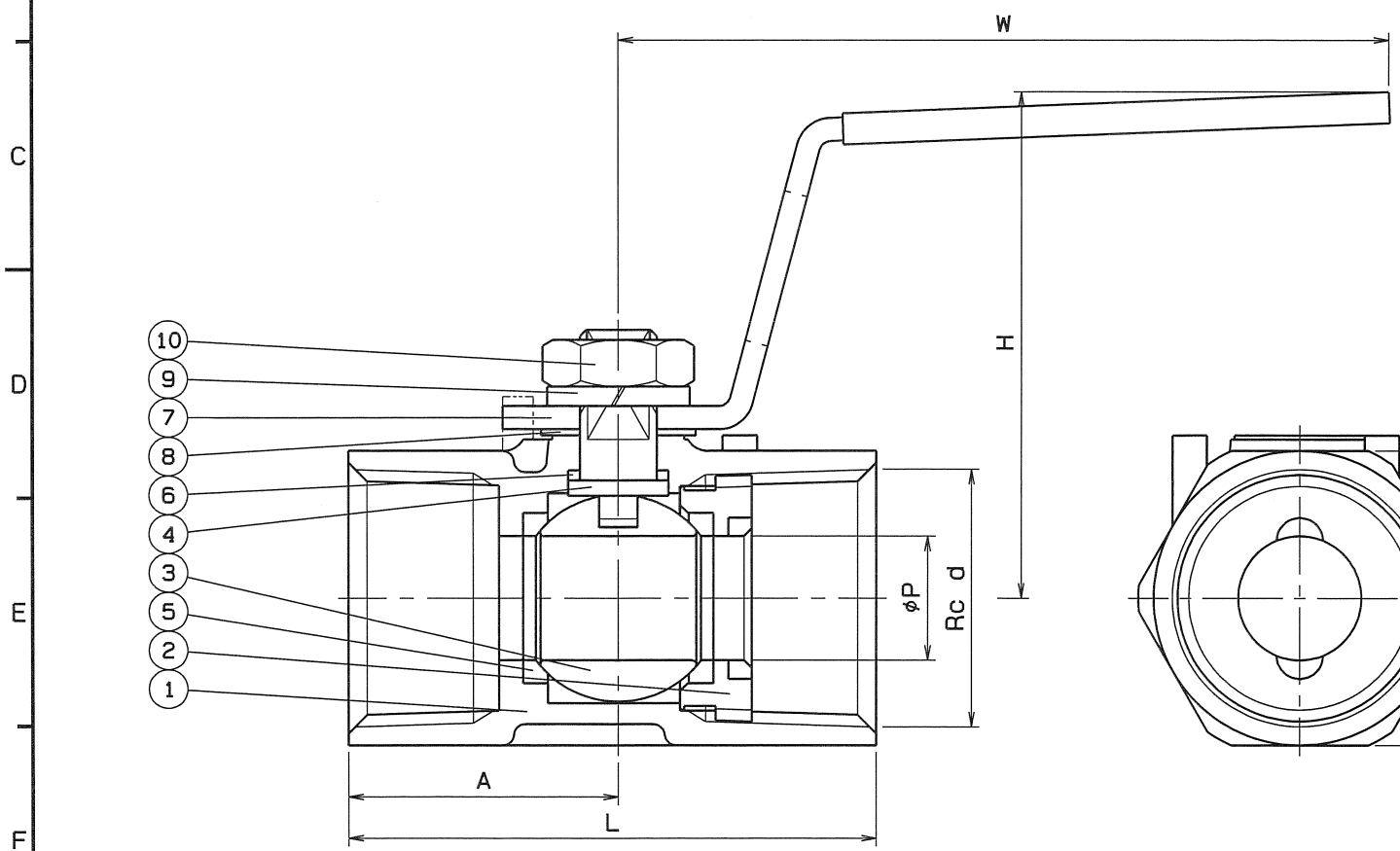


◇ I090-SWVB 091 990



SIZE	PIPE THREADS	P	L	H	W	A	B	Q, TY
	d							
1/4	Rc 1/4	5	40	36	60	19	17	
3/8	Rc 3/8	7	42.5	41	70	21	20.5	
1/2	Rc 1/2	9	54	50	85	26.5	25	
3/4	Rc 3/4	12.5	58	53	85	29.5	30.5	
1	Rc 1	16	68.5	65	100	35	38	
1 1/4	Rc 1 1/4	20	79	68	100	40	47	
1 1/2	Rc 1 1/2	24.5	86	83	125	43.5	53.5	
2	Rc 2	32	105	89	125	53	66	



SPEC.		TEST PRESS.	
FLUID		SHELL	8.24 MPa (84 kgf/cm ²)
PRESS.	MPa (kgf/cm ²)	SEAT	0.6 MPa (6.1 kgf/cm ²)
TEMP.	°C	AIR	MPa (kgf/cm ²)

PIPE THREADS CONFORM WITH 'JIS B 0203'
No.3 1 1/2, 2B MATERIAL: SCS 14

No.	NAME OF PARTS	Q.TY	MATERIALS	REMARKS
10	HEXAGON NUT	1	SUS 304	
9	SPRING WASHER	1	SUS 304	
8	CONICAL WASHER	1	SUS 304	
7	HANDLE	1	SUS 304	
6	THRUST PACKING	1	P.T.F.E.	No FILLED
5	BALL SEAT	2	P.T.F.E.	
4	STEM	1	SUS 316	
3	BALL DISC	1	SUS 316	
2	SEAT HOLDER	1	SUS 316	
1	BODY	1	SCS 14	

NAME	800 W.O.G. SCREWED ENDS MINI BALL VALVES REDUCED BORE		
TYPE	N-600	SIZE	1/4 ~ 2 B
DMG.No.	BAMS-0601	APPROVED BY	H. Ogawa
DATE	MAY. 6. 1993	CHECKED BY	H. Ogawa
SCALE	:	DESIGNED BY	R. Matsuki
THIRD ANGLE PROJECTION METHOD		DRAWN BY	

△	ハンドルの材質変更	'18. 7. 31.
△	SI単位に変更	'99. 5. 24.

O. N. INDUSTRIES LTD.