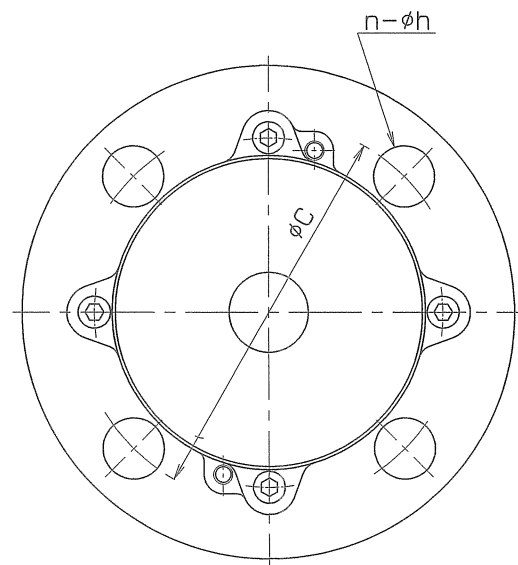
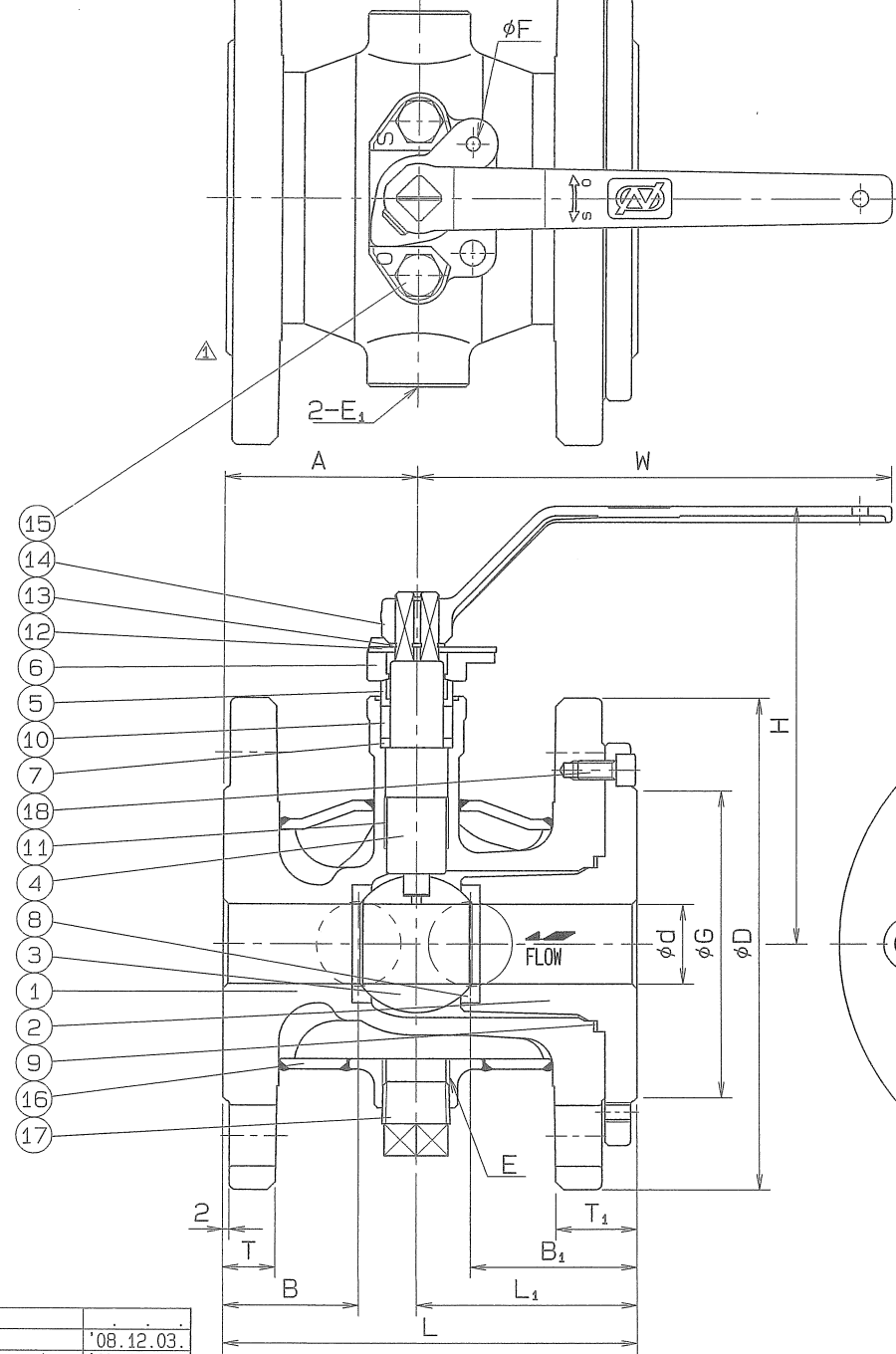


1 2 3 4 5 6 7 8
 ④ 0690-SRVB ④ ON 9M0

SIZE	FLANGE SIZE	d	L	L ₁	D	T	T ₁	G	BOLT HOLE			H	W	A	B	B ₁	E	E ₁	F	Q, TY
									C	n	h									
15	40	15	110	59.5	140	16	25.5	81	105	4	19	126	130	50.5	50.5	59.5	Rp 1/2	Rp 3/4	4.3	
20	40	20	120	64.5	140	16	25.5	81	105	4	19	134	150	55.5	55.5	64.5	Rp 1/2	Rp 3/4	4.3	
25	50	25	130	69.5	155	16	25.5	96	120	4	19	137	150	60.5	60.5	69.5	Rp 1/2	Rp 3/4	4.3	

A
B
C
D
E
F



SPEC.		TEST PRESSURE	
FLUID		SHELL	HYDRO 2.1 MPa (21.4kgf/cm ²)
PRESS.	MPa (kgf/cm ²)	SEAT	AIR 0.6 MPa (6.1 kgf/cm ²)
TEMP.	°C	JACKET	AIR 0.6 MPa (6.1 kgf/cm ²)

END FLANGED : JIS B 2220

No.	NAME OF PARTS	Q.TY	MATERIALS	REMARKS
18	SOCKET BOLT	4	SUS 304	
17	DRAIN PLUG	1	SCS 13	R1/2
16	JACKET	1	SCS 13A	
15	GLAND BOLT	2	SUS 304	
14	HANDLE	1	SCS 13	
13	STOP RING	1	SUS 304	
12	STOPPER	1	SUS 304	
11	BEARING	1	P.T.F.E.	+SUS 316
10	GLAND PACKING	1SET	P.T.F.E.	CARBON FILLED
9	GASKET PACKING	1	P.T.F.E.	CARBON FILLED
8	BALL SEAT	2	P.T.F.E.	GLASS FILLED
7	THRUST RING	1	SUS 329J1	
6	GLAND	1	SCS 13	
5	GLAND SLEEVE	1	SUS 316	
4	STEM	1	SUS 316	
3	BALL DISC	1	SCS 14A	
2	SEAT HOLDER	1	SCS 14A	
1	BODY	1	SCS 14A	

NAME	JIS 10 K R.F. FLANGED ENDS			
TYPE	JACKET TYPE STRAIGHT WAY BALL VALVES			
DWG.No.	BAJS-0655	APPROVED BY	K. Yamato	
DATE	DEC. 19. 2006.	CHECKED BY	K. Asakura	
SCALE	:	DESIGNED BY	-	
THIRD ANGLE PROJECTION METHOD		DRAWN BY	K. Taketaka	

△	40A 削除	'08.12.03.
△	ボールシート材質・平面図変更	'07.04.04.

O. N. INDUSTRIES LTD.