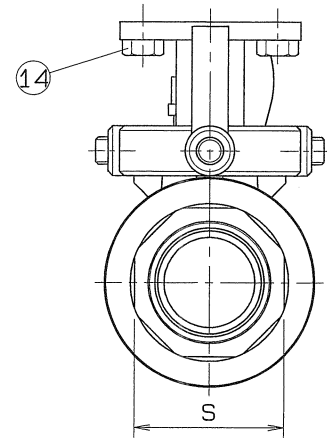
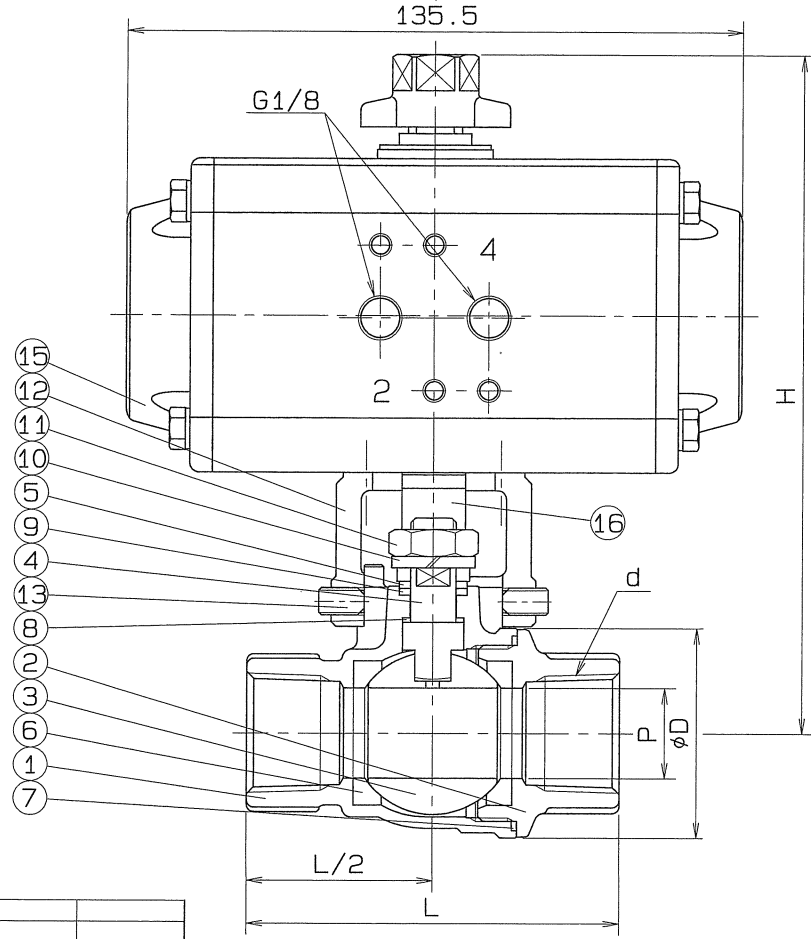
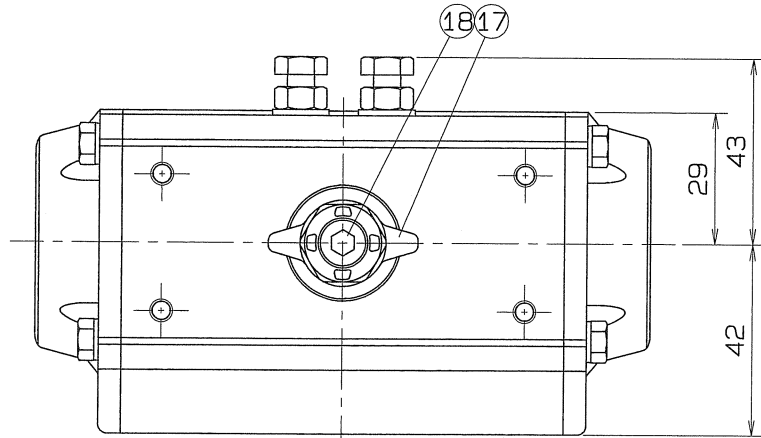


◇ 9979-SVVB 'ON' 9MC



SIZE	P	L	PIPE THREADS	H	D	S	Q, TY
			d				
1/4	8	55	Rc 1/4	142	27	18	
3/8	10	57	Rc 3/8	143	30	22	
1/2	15	72	Rc 1/2	147	38	27	
3/4	20	82	Rc 3/4	151	46.5	33	
1	25	92	Rc 1	155	54	40	

SPEC.		TEST PRESS.	
FLUID	清水	SHELL	HYDRO 2.1 MPa (21.4kgf/cm ²)
PRESS.	0.98 MPa (10 kgf/cm ²) 以下	SEAT	AIR 0.6 MPa (6.1kgf/cm ²)
TEMP.	常温	AIR	MPa (kgf/cm ²)

注) 上記の流体条件と異なる場合
シリンダサイズが変更になる場合があります。

TORQUE CYLINDER			
TYPE	AT051UD		
ACTION	DOUBLE	OPERATION PROPERTY	ON-OFF
SUPPLY PRESSURE	0.39 MPa (4 kgf/cm ²)	HAND DEVICE	NOTHING

OPERATION
PORT2 AIR SUPPLY : LEFT TURN - VALVE OPEN
PORT4 AIR SUPPLY : RIGHT TURN - VALVE SHUT
PIPE THREADS CONFORM WITH 'JIS B 0203' TAPER
No.3 1/4, 3/8B MATERIAL : SUS 304

18	CAP HEAD BOLT	1	SUS 304	
17	INDICATOR	1	SCS 13	
16	COUPLING	1	SCS 13	
15	TORQUE CYLINDER	1		
14	HEXAGON BOLT	4	SUS 304	
13	SET BOLT	4	SUS 304	
12	BRACKET	1	SCS 13	
11	HEXAGON NUT	1	SUS 304	
10	SPRING WASHER	1	SUS 304	
9	THRUST BEARING	1	P.T.F.E.	CARBON FILLED
8	THRUST PACKING	1	P.T.F.E.	CARBON FILLED
7	GASKET PACKING	1	P.T.F.E.	
6	BALL SEAT	2	P.T.F.E.	
5	GLAND	1	SUS 316	
4	STEM	1	SUS 304	
3	BALL DISC	1	SCS 13A	
2	BODY CAP	1	SCS 13	
1	BODY	1	SCS 13	

No.	NAME OF PARTS	Q. TY	MATERIALS	REMARKS
NAME JIS10K SCREWED ENDS (DOUBLE ACTION) CYLINDER OPERATED MINI BALL VALVES				
TYPE		N-620HY2	SIZE	1/4~1B
Dwg.No.		BAAS-5165 ◇	APPROVED BY	<i>H. Miura</i>
DATE		FEB. 21, 2011	CHECKED BY	<i>H. Miura</i>
SCALE			DESIGNED BY	
THIRD ANGLE PROJECTION METHOD			DRAWN BY <i>H. Miura</i>	

O. N. INDUSTRIES LTD.