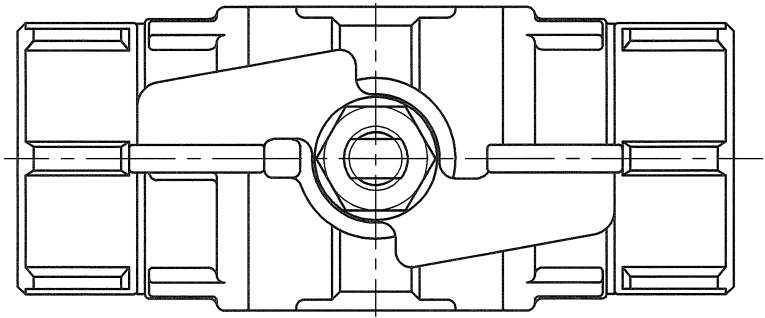
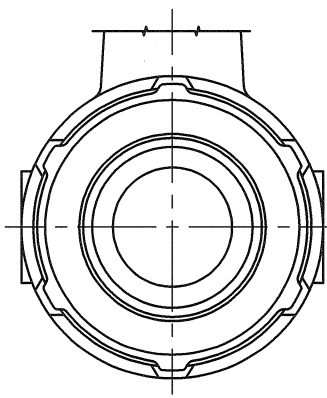
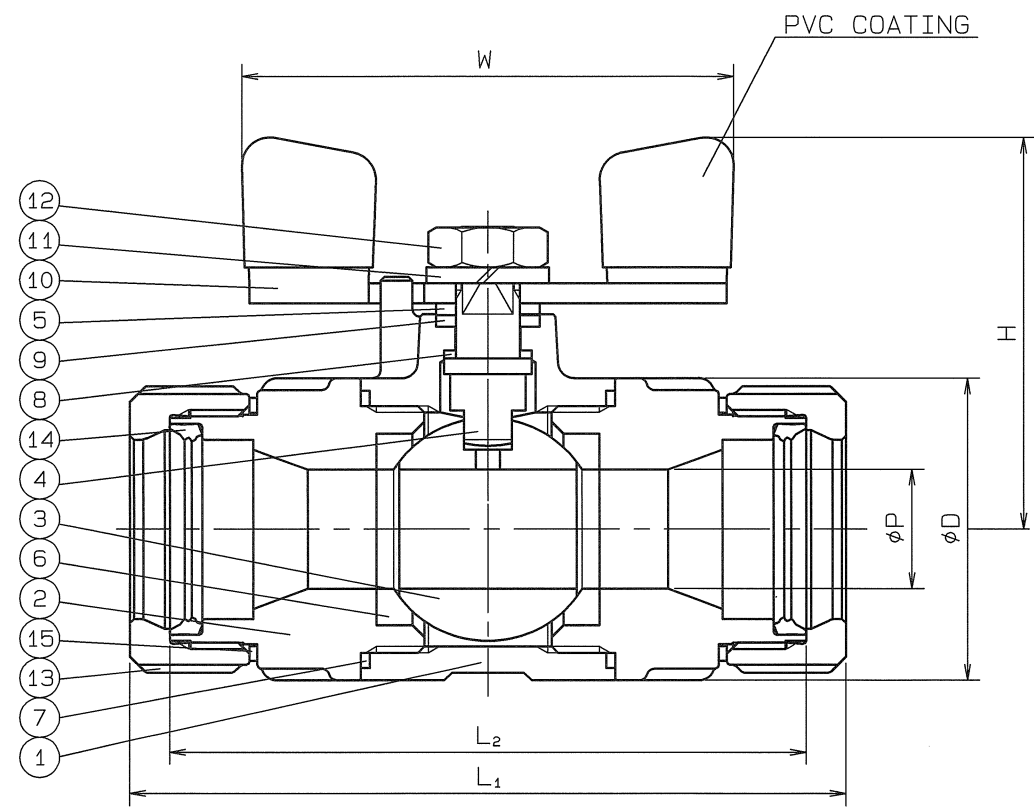


◇ 8860-SWVB 'ON' 980

SIZE	P	L ₁	L ₂	H	W	D	Q, TY
13 Su	10	78	70	46	60	33	
20 Su	15	90	80	50	60	38	
25 Su	20	97	85	58	80	47	



SPEC.		TEST PRESS.	
FLUID		SHELL	HYDRO 3.5 MPa (35.7 kgf/cm ²)
PRESS.	MAX 2.0 MPa (20.4 kgf/cm ²)	SEAT	AIR 0.6 MPa (6.1 kgf/cm ²)
TEMP.	MAX 100°C	AIR	MPa (kgf/cm ²)



PIPE THREADS CONFORM WITH 'JIS B 0203'
*SPECIAL TEFLON

No.	NAME OF PARTS	Q. TY	MATERIALS	REMARKS
15	CONICAL WASHER	2	JFE443CT	
14	RUBBER PACKING	2	SYNTHETIC RUBBER (HNBR)	
13	NUT	2	SCS 13	
12	HEXAGON NUT	1	SUS 304	
11	SPRING WASHER	1	SUS 304	
10	HANDLE	1	SUS 304	
9	THRUST BEARING	1	P.T.F.E.	CARBON FILLED
8	THRUST PACKING	1	P.T.F.E.	CARBON FILLED
7	GASKET PACKING	2	P.T.F.E.	
6	BALL SEAT	2	P.T.F.E.	*
5	GLAND	1	SUS 316	
4	STEM	1	SUS 316	
3	BALL DISC	1	SCS 13A	13Su-SUS 304
2	BODY CAP	2	SCS 13	
1	BODY	1	SCS 13	

NAME	NICE JOINT ENDS REDUCED BORE MINI BALL VALVES		
TYPE	NJ-310	SIZE	13~25Su
ENG.No.	BAMS-0988 ◇	APPROVED BY	<i>K. Ashida</i>
DATE	AUG. 23. 2013	CHECKED BY	<i>K. Ashida</i>
SCALE	:	DESIGNED BY	-
THIRD ANGLE PROJECTION METHOD	DRAWN BY <i>K. Ashida</i>		

O. N. INDUSTRIES LTD.

△		
△		
△		