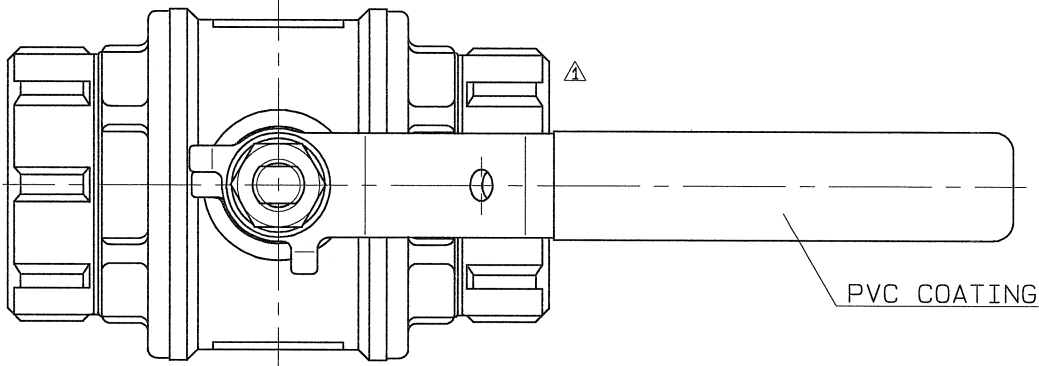
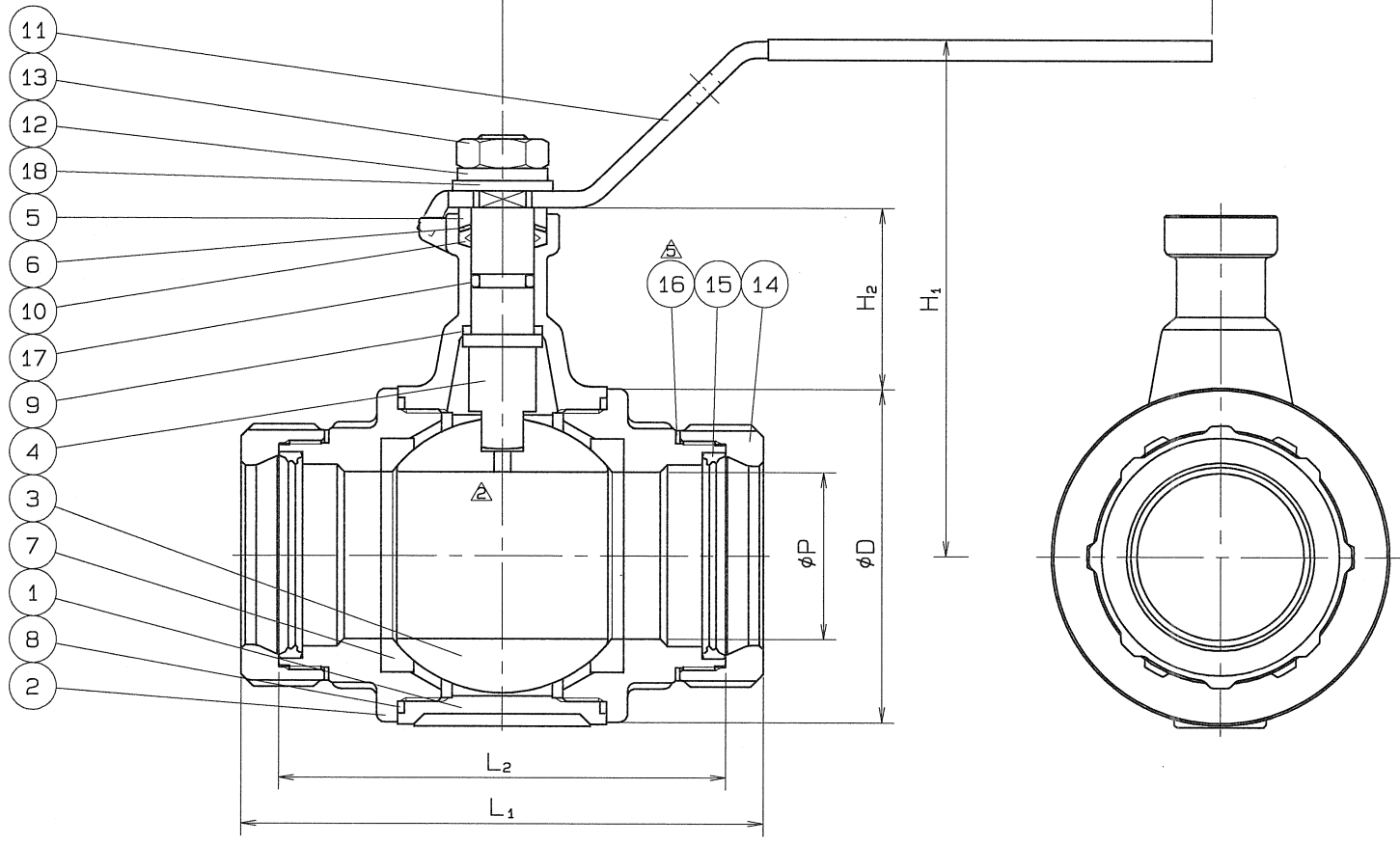


◇ BAMS-0838 DWG.No. BAMS-0838

SIZE	P	L <sub>1</sub>	L <sub>2</sub>	H <sub>1</sub>	H <sub>2</sub>	W	D	Q, TY
30 Su	32	114	100	119	44	170	67	
40 Su	40	125	107	125	43	170	80	



SPEC.		TEST PRESS.	
FLUID		SHELL	HYDRO 3.5 MPa (35.7 kgf/cm <sup>2</sup> )
△ PRESS.	MAX 2.0 MPa (20.4 kgf/cm <sup>2</sup> )	SEAT	AIR 0.6 MPa (6.1 kgf/cm <sup>2</sup> )
△ TEMP.	MAX 100℃	AIR	( MPa kgf/cm <sup>2</sup> )



△\*SPECIAL TEFLON

No.	NAME OF PARTS	Q. TY	MATERIALS	REMARKS
18	PLAIN WASHER	1	SUS 304	
17	O RING	1	VITON	
△ 16	CONICAL WASHER	2	JFE443CT	
15	RUBBER PACKING	2	SYNTHETIC RUBBER (HNBR)	
14	NUT	2	SCS 13	
13	HEXAGON NUT	1	SUS 304	
12	SPRING WASHER	1	SUS 304	
11	HANDLE	1	SUS 304	
10	GLAND PACKING	1	P.T.F.E.	
9	BEARING	1	P.T.F.E.	CARBON FILLED
8	GASKET PACKING	2	P.T.F.E.	
△ 7	BALL SEAT	2	P.T.F.E.	*
6	WASHER	1	SUS 304CSP	
5	GLAND BUSHING	1	SUS 304	
4	STEM	1	SUS 304	
△ 3	BALL DISC	1	SCS 13A	
2	BODY CAP	2	SCS 13	
1	BODY	1	SCS 13	

NAME NICE JOINT ENDS FULL BORE LONG NECK TYPE MINI BALL VALVES			
TYPE	NJ-220	SIZE	30, 40Su
DWG.No.	BAMS-0838 ◇	APPROVED BY	<i>M. Saito</i>
DATE	MAY. 10. 2000	CHECKED BY	<i>K. Adachi</i>
SCALE	:	DESIGNED BY	—
THIRD ANGLE PROJECTION METHOD		DRAWN BY <i>M. Sakai</i>	

△ 使用圧力, 使用温度追加	H24. 1. 13.
△ 検査圧力の変更	H23. 2. 9.
△ 皿ワッシャ材質変更	H22. 2. 10.